

(12) **United States Patent**
Le et al.

(10) **Patent No.:** **US 11,757,532 B1**
(45) **Date of Patent:** **Sep. 12, 2023**

(54) **ACOUSTO-OPTIC DEFLECTOR AND TELECOMMUNICATION SYSTEM**

(71) Applicants: **Khanh Le**, Bellwood, IL (US); **John Lekavich**, Bellwood, IL (US); **Bao Tran**, Saratoga, CA (US)

(72) Inventors: **Khanh Le**, Bellwood, IL (US); **John Lekavich**, Bellwood, IL (US); **Bao Tran**, Saratoga, CA (US)

(73) Assignee: **IntraAction Corp.**, Bellwood, IL (US)

(*) Notice: Subject to any disclaimer, the term of this patent is extended or adjusted under 35 U.S.C. 154(b) by 0 days.

(21) Appl. No.: **18/132,064**

(22) Filed: **Apr. 7, 2023**

Related U.S. Application Data

(63) Continuation of application No. 18/132,054, filed on Apr. 7, 2023, and a continuation of application No. 18/132,047, filed on Apr. 7, 2023, and a continuation of application No. 18/132,074, filed on Apr. 7, 2023, and a continuation of application No. 18/132,070, filed on Apr. 7, 2023, and a continuation of application No. 18/132,025, filed on Apr. 7, 2023, and a continuation of application No. 18/132,069, filed on Apr. 7, 2023, and a continuation of application No. 18/132,058, filed on Apr. 7, 2023, and a continuation of application No. 18/132,034, filed on Apr. 7, 2023, and a continuation of application No. 18/132,076, filed on Apr. 7, 2023.

(51) **Int. Cl.**
H04B 10/50 (2013.01)
H04B 10/25 (2013.01)
G02F 1/29 (2006.01)
G02F 1/33 (2006.01)

(52) **U.S. Cl.**
CPC **H04B 10/503** (2013.01); **G02F 1/292** (2013.01); **G02F 1/33** (2013.01); **H04B 10/25** (2013.01)

(58) **Field of Classification Search**
CPC H04B 10/503; H04B 10/25; G02F 1/292; G02F 1/33
USPC 398/200
See application file for complete search history.

(56) **References Cited**

U.S. PATENT DOCUMENTS

6,424,451 B1* 7/2002 Chang G02F 1/11 359/305
2015/0338718 A1* 11/2015 Zhang G02F 1/33 359/305
2018/0299745 A1* 10/2018 Morse G02F 1/33

* cited by examiner

Primary Examiner — Dalzid E Singh

(74) *Attorney, Agent, or Firm* — PatentPC; Bao Tran

(57) **ABSTRACT**

A telecom system is disclosed with a laser controlled by an acousto-optic deflector including an optical element having a surface with one or more steps formed thereon; a conductive layer formed on the surface with the steps; one or more crystals secured to each step; and electrodes positioned on each surface of each crystal.

19 Claims, 6 Drawing Sheets

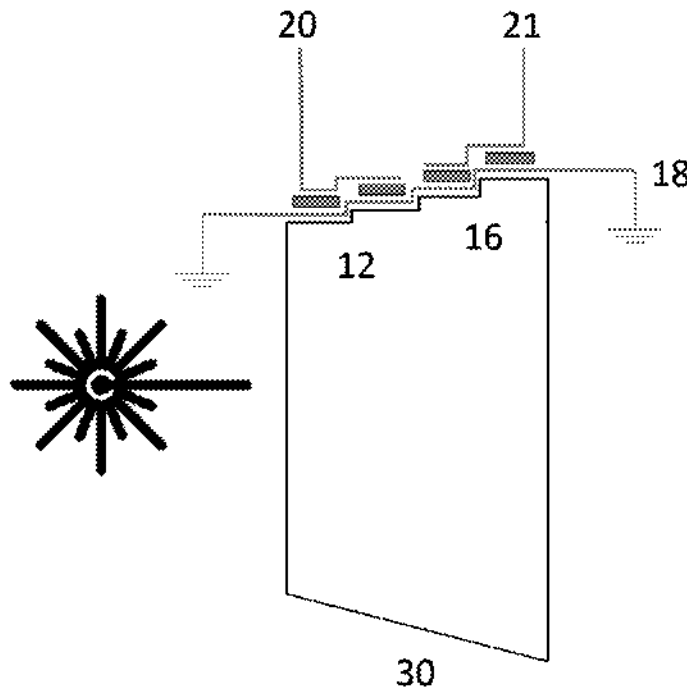


FIG. 1A

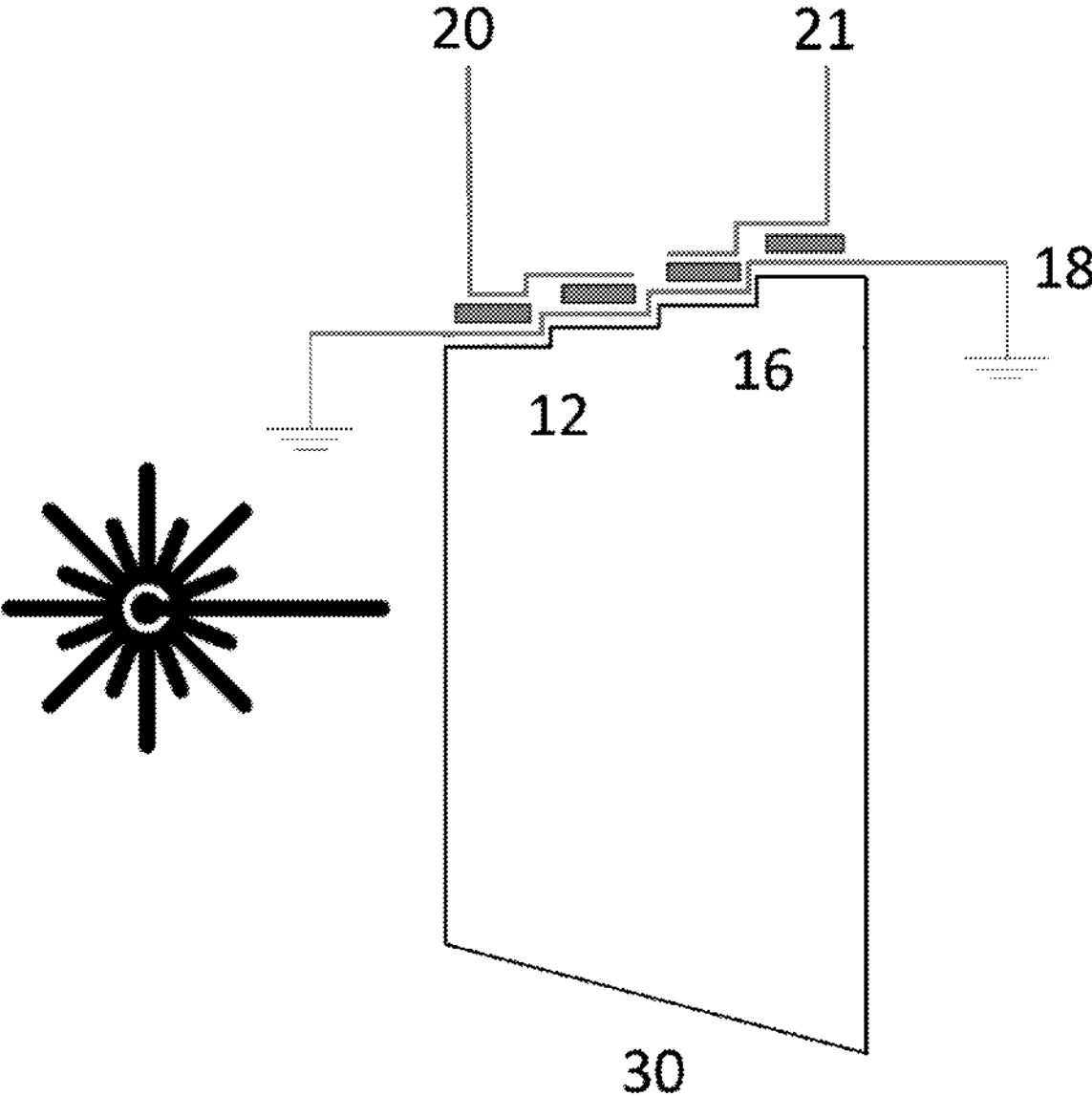


FIG. 1B

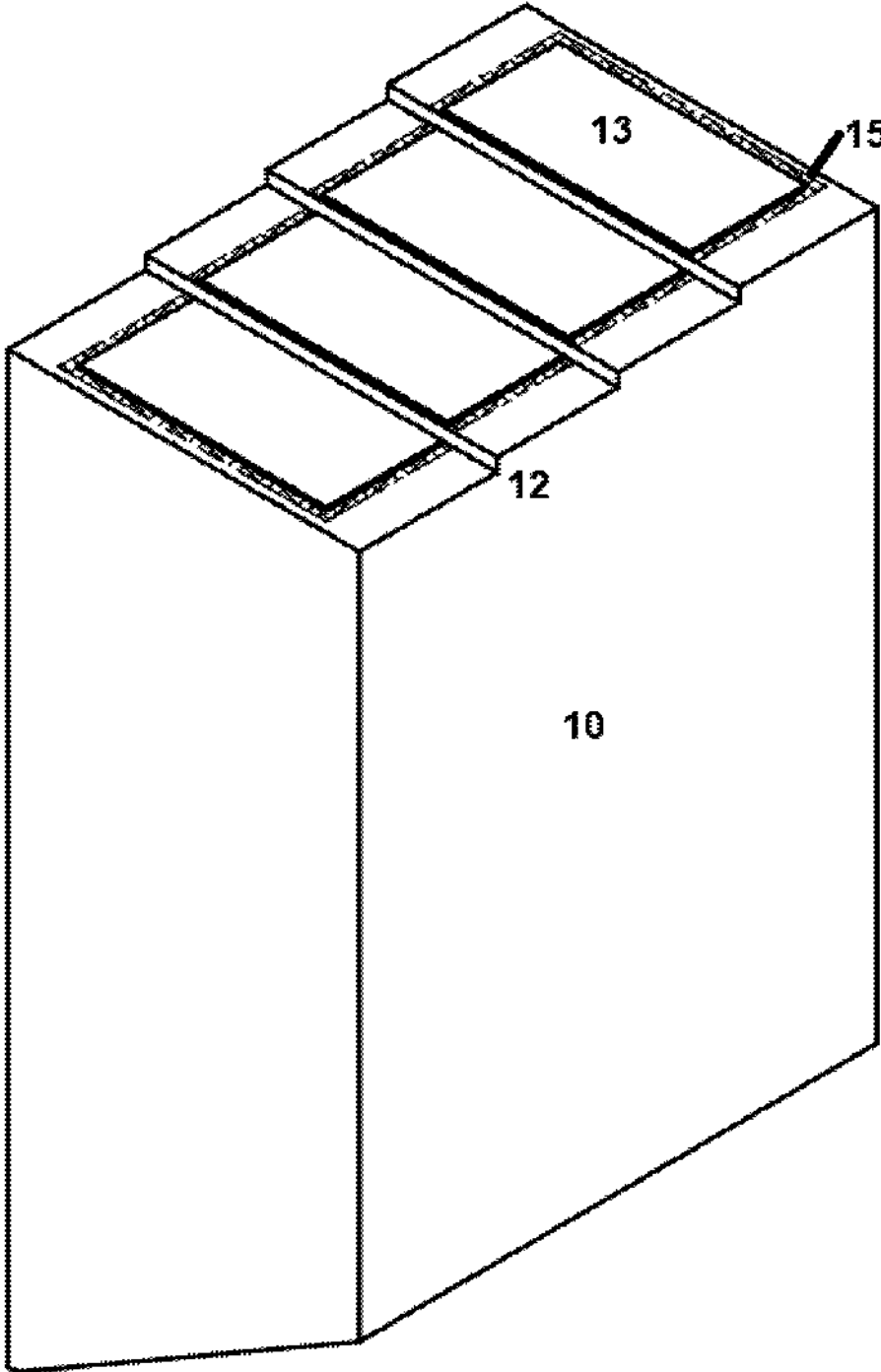


FIG. 2A

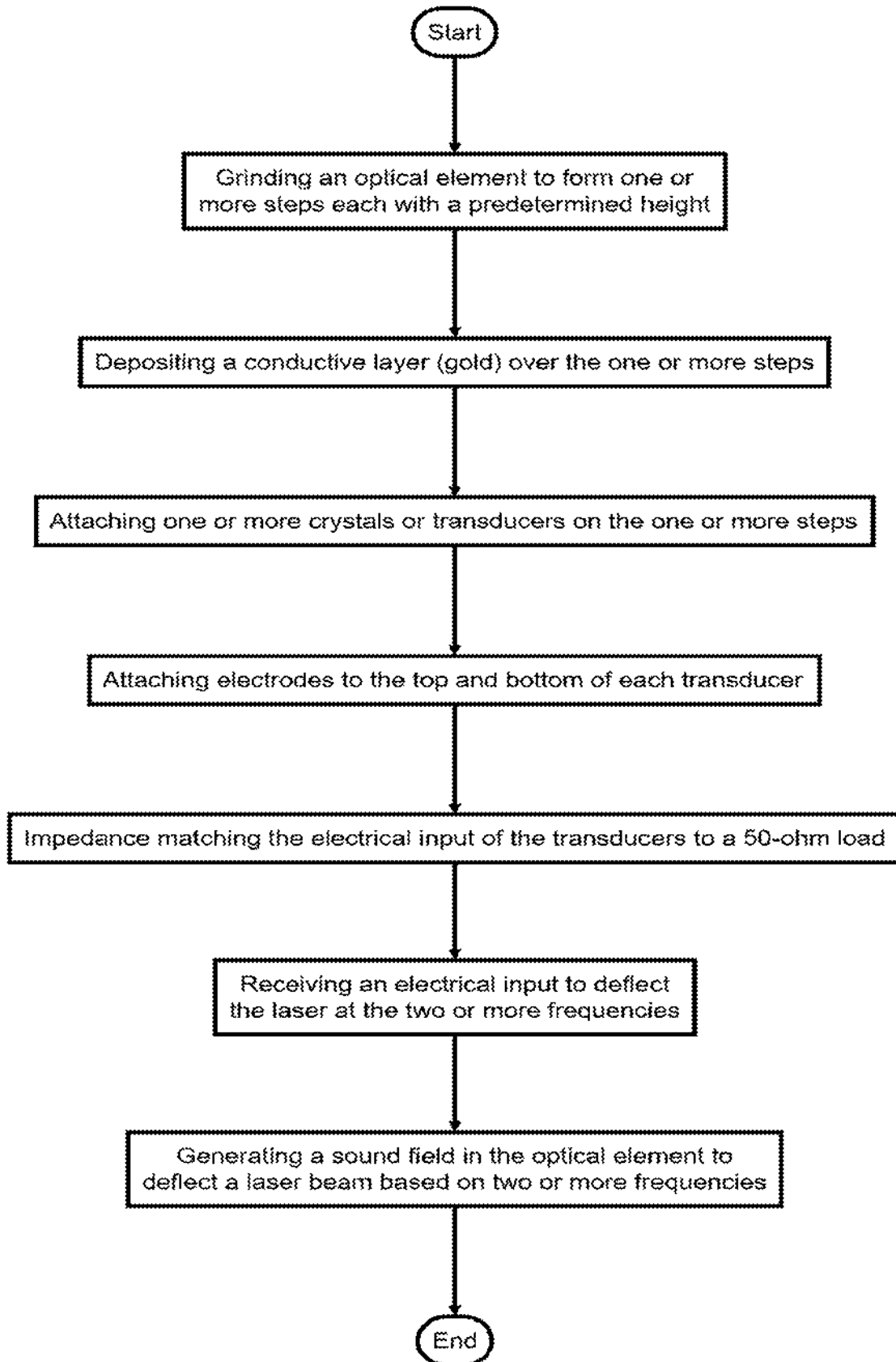


FIG. 2B

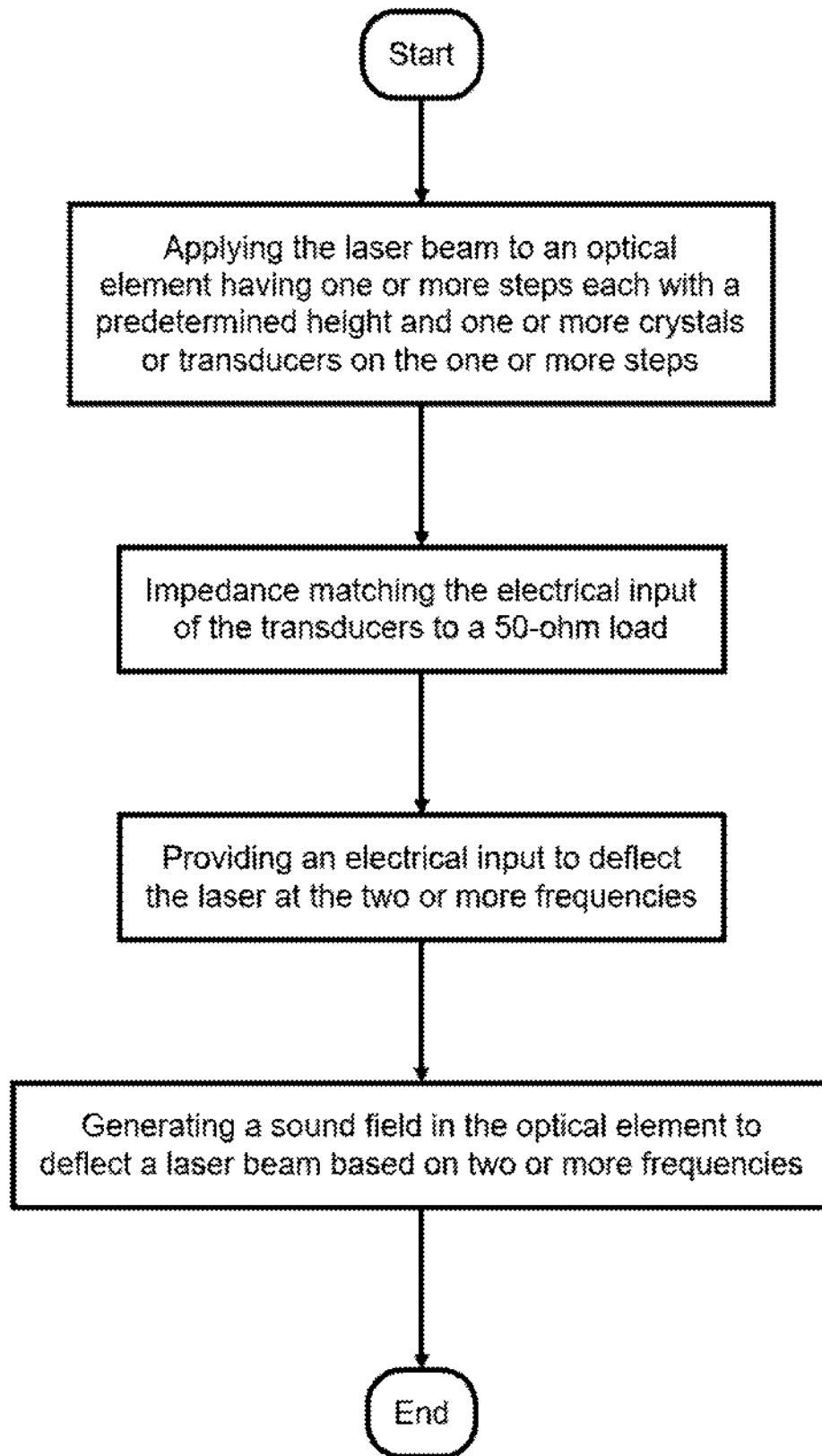


FIG. 3

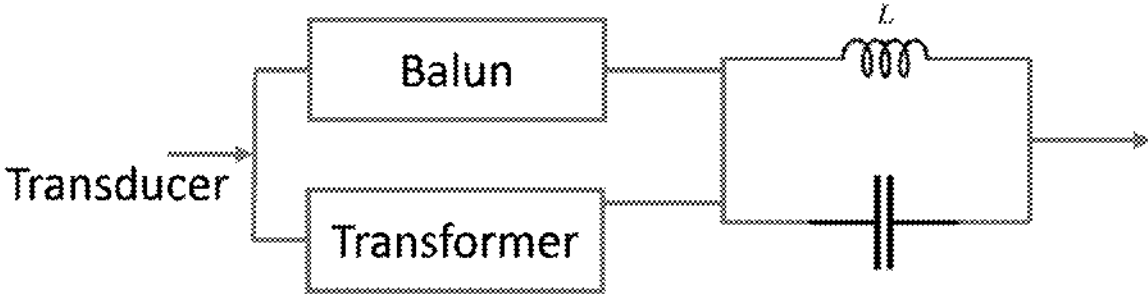
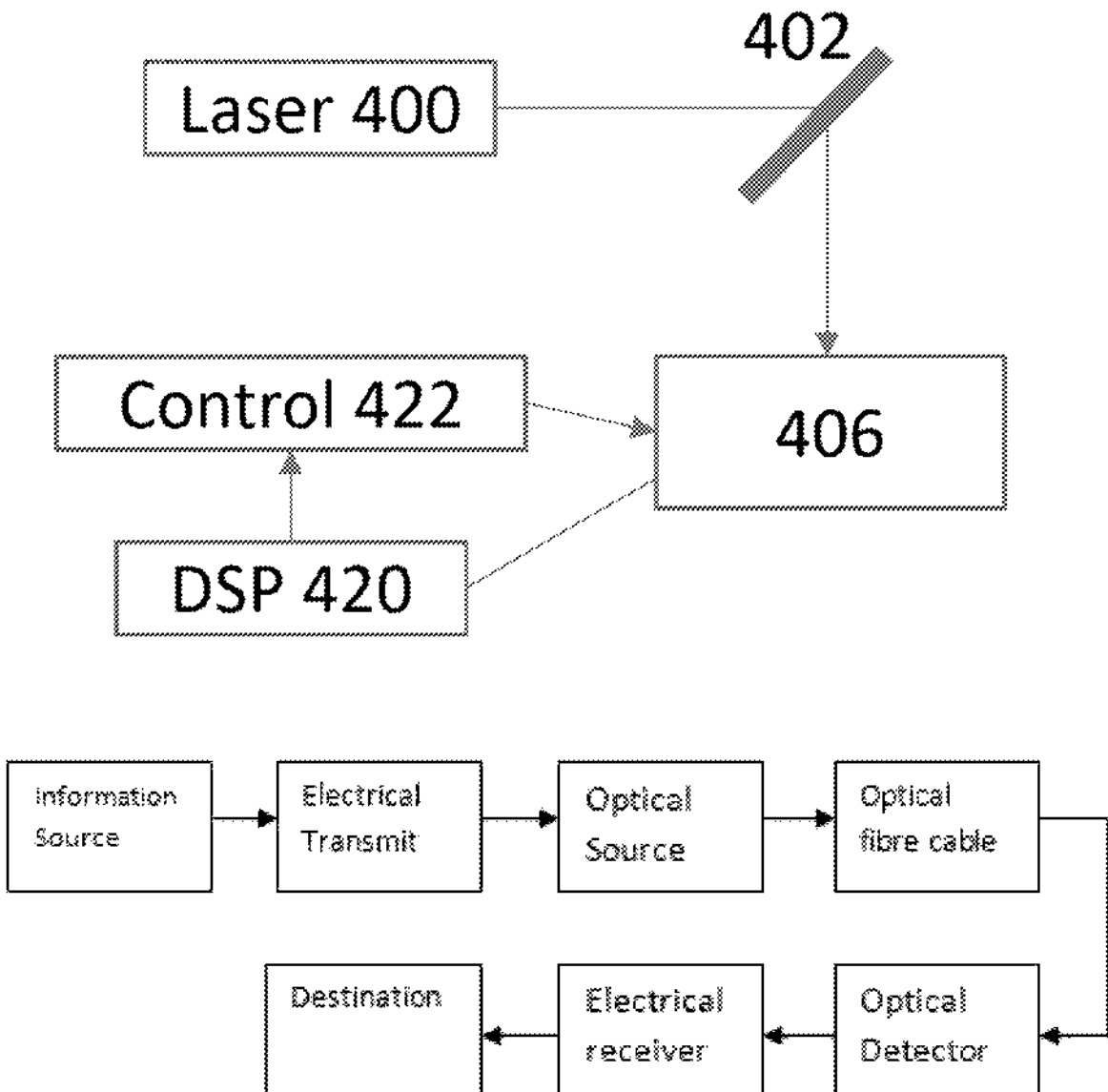


FIG. 4



ACOUSTO-OPTIC DEFLECTOR AND TELECOMMUNICATION SYSTEM

This application claims priority to co-pending, commonly filed applications on Apr. 7, 2023 with Serial Nos. 18132025, 18132034, 18132047, 18132054, 18132058, 18132064, 18132069, 18132070, 18132074, the contents of which are incorporated by reference.

BACKGROUND

The present invention relates to an acousto-optic transducer for a laser communication system.

Telecommunication systems are necessary for efficient and effective communication over long distances, whether through voice, data, or video transmission. They enable individuals, businesses, and governments to connect and share information across geographic locations, allowing for real-time collaboration and decision-making. Telecommunication systems also facilitate e-commerce, telemedicine, and remote education, among other applications. They are essential for modern society to function and for driving innovation and economic growth.

SUMMARY

A telecom system is disclosed with a laser controlled by an acousto-optic deflector including an optical element having a surface with one or more steps formed thereon; a conductive layer formed on the surface with the steps; one or more crystals secured to each step; and electrodes positioned on each surface of each crystal.

In another aspect, a telecommunication system includes a laser to generate an optical beam; lens coupled to the laser; a phased array acousto-optic device configured to modulate the optical beam according to an input signal, the device having an optical element having a surface with one or more steps formed thereon; a conductive layer formed on the surface with the steps; one or more crystals secured to each step; and electrodes positioned on each surface of each crystal; and a controller coupled to the phased array acousto-optic device to control the laser beam and communicate data over the laser beam.

In one aspect, a telecommunications system includes a phased array acousto-optic device configured to modulate an optical beam according to an input signal, wherein the phased array acousto-optic device includes multiple transducers that can be individually addressed to generate different optical beam angles and frequencies, and a control circuit that generates the input signal to selectively activate the transducers to steer the optical beam in a desired direction.

In another aspect, a telecommunications system includes: a phased array acousto-optic device configured to deflect an optical beam by an angle that depends on the frequency of an input electrical signal, wherein the phased array acousto-optic device includes multiple transducers that can be individually addressed to generate different optical beam angles and frequencies, and a control circuit that generates the input signal to selectively activate the transducers to steer the optical beam in a desired direction.

In yet another aspect, a telecommunications system includes a phased array acousto-optic device configured to switch an optical beam between two or more output ports by applying an input electrical signal that varies the frequency of the optical beam, wherein the phased array acousto-optic device includes multiple transducers that can be individually

addressed to generate different optical beam angles and frequencies, and a control circuit that generates the input signal to selectively activate the transducers to steer the optical beam to the desired output port.

In a further aspect, a telecommunications system includes a phased array acousto-optic device configured to modulate an optical beam with a signal having a frequency in the radio frequency (RF) or microwave range, wherein the phased array acousto-optic device includes multiple transducers that can be individually addressed to generate different optical beam angles and frequencies, and a control circuit that generates the RF or microwave signal to modulate the optical beam in a desired manner.

In one embodiment, a telecommunications system comprising: a phased array acousto-optic device configured to compress an optical pulse by applying an input electrical signal that varies the frequency of the optical beam, wherein the phased array acousto-optic device includes multiple transducers that can be individually addressed to generate different optical beam angles and frequencies, and a control circuit that generates the input signal to selectively activate the transducers to compress the optical pulse to a desired duration.

In one aspect, an acousto-optic deflector telecom system includes a laser controlled by an optical element having a surface with one or more steps formed thereon; a conductive layer formed on the surface with the steps; one or more crystals secured to each step; and one or more electrodes positioned on the surface of the one or more crystals.

Implementations of the above aspect can include one or more of the following. A tuning element can be used to match a predetermined impedance. The tuning element can provide an output impedance of 50 ohms for one use case. The tuning element can have inductive and capacitive passive components. In one embodiment, the tuning element can be a 1:1 balun, 4:1 transformer, a capacitor, and an inductor. The optical element comprises a slanted end. The tuning element matches a deflector output impedance at 40 MHz and at 60 MHz to a 50 ohm impedance. The slanted end can have a compound angle designed to drive the reflected sound field out of a laser beam working range so that no reflected sound wave can impact laser performance. In one specific design, the slanted end forms a 30 degree angle measured from a long side of the optical element to a short side of the optical element and the surface of the slanted end has a 2 degree slope. The optical element can be germanium, tellurium dioxide (TeO₂), lithium niobate, PZT, fused silica, chalcogenide glasses, or glass, for example.

In another aspect, a method to form a phased-array transducer includes

- grinding an optical element to form two or more steps each with a predetermined height;
- depositing a conductive layer (gold) over the one or more steps;
- attaching one or more crystals or transducers on the one or more steps; and
- attaching electrodes to the top and bottom of each transducer.

Implementations of the above aspect can include one or more of the following. The method includes matching the input of the transducers to a predetermined impedance. A tuning element can be connected to the transducers with an output impedance of 50 ohms. The tuning element includes inductive and capacitive passive components. The tuning element can have a 1:1 balun, a 4:1 transformer, a capacitor, and an inductor. The optical element can have a slanted end, wherein the slanted end comprises a compound angle to

3

move reflected sound field out of a laser beam working range. The slanted end forms a 30 degree angle measured from a long side of the optical element to a short side of the optical element. A surface of the slanted end has a 2 degree slope. The optical element comprises germanium, tellurium dioxide (TeO₂), lithium niobate, PZT, fused silica, chalcogenide glasses, glass. The tuning element matches a deflector output impedance at 40 MHz and at 60 MHz to a 50 ohm impedance.

In another aspect, a method to deflect a laser beam includes:

- applying the laser beam to an optical element having one or more steps each with a predetermined height and one or more crystals or transducers on the one or more steps;
- impedance matching the electrical input of the transducers to a 50-ohm load;
- providing an electrical input to deflect the laser at the two or more frequencies; and
- generating a sound field in the optical element to deflect a laser beam based on two or more frequencies.

In a further aspect, a method to form an opto-acoustic deflector includes

- grinding an optical element to provide one or more steps each with a predetermined height;
- depositing a layer of gold over the one or more steps; and
- attaching one or more crystals or transducers on the one or more steps.

Implementations of the above aspect can include one or more of the following. The method includes tuning the electrical output for 40 MHz and 60 MHz output. A slanted end is formed on the optical element with a compound angle to move reflected sound field out of a laser beam working range. The slanted end forms a 30 degree angle measured from a long side of the optical element to a short side of the optical element. A surface of the slanted end comprises a 2 degree slope.

In another aspect, a method to form and to operate an opto-acoustic deflector includes:

- grinding an optical element to form one or more steps each with a predetermined height;
- depositing a conductive layer (gold) over the one or more steps;
- attaching one or more crystals or transducers on the one or more steps;
- attaching electrodes to the top and bottom of each transducer;
- impedance matching the electrical input of the transducers to a 50-ohm load;
- receiving an electrical input to deflect the laser at the two or more frequencies; and
- generating a sound field in the optical element to deflect a laser beam based on two or more frequencies.

Implementations can include one or more of the following. The method can include tuning the electrical output for 40 MHz and 60 MHz output. The method includes forming a slanted end on the optical element. The method further includes forming a compound angle to move reflected sound field out of a laser beam working range. The slanted end forms a 30 degree angle measured from a long side of the optical element to a short side of the optical element. A surface of the slanted end comprises a 2 degree slope. The method includes grinding the optical element, which can be germanium, tellurium dioxide (TeO₂), lithium niobate, PZT, fused silica, chalcogenide glasses, glass, among others.

Advantages of the system may include one or more of the following. The deflector can operate with two distinct fre-

4

quencies, for example at 40 and 60 MHz, resulting in a single device that can do the job of two. The deflector thus is smaller, lower power, and higher matching behavior over versions that require two separate deflectors each geared toward a particular frequency. The acousto-optic deflector is a versatile device that provides precise and efficient control over the direction of a laser beam. Its ability to scan and steer laser beams in a specific direction makes it an essential tool in various applications such as microscopy, laser printing, and laser communication.

BRIEF DESCRIPTION OF THE DRAWINGS

FIG. 1A-1B show an exemplary phased array opto-acoustic deflector.

FIG. 2A-2B show exemplary processes for forming and using the deflector of FIG. 1A.

FIG. 3 shows an exemplary tuning element that is coupled to the electrodes to match a predetermined impedance.

FIG. 4 shows an exemplary opto-acoustic laser system for telecommunication transmission.

DESCRIPTION

FIG. 1A shows an exemplary phased array opto-acoustic system. In a phased array opto-acoustic system, a pulsed laser beam is used to generate acoustic waves in a sample chamber such as optical element that receives the laser beam. The laser beam path is altered by the sound generated by the opto-acoustic elements in a transducer coupled to the optical element.

FIG. 1A-113 show a device 10 having stepped surfaces 12 and 16 on one end, and an angled end 30 opposite to the stepped surfaces 12 and 16. Turning now to FIG. 1A, an exemplary phase-array device includes an optical element having a surface with one or more steps formed thereon, where the optical element has at least two step heights. The different heights of the steps affect the acousto-optic RF frequency responses.

Transducers are mounted above the stepped surfaces 12 and 16, with one side of each transducer coupled to RF inputs 20-21 respectively, and the other side of the transducer connected to ground 18. The phased array transducer array has a plurality of transducers mounted on a top surface, with each transducer at a different height. Each transducer in the array is positioned at different vertical positions, such as at different heights above a sample chamber surface. One example of such an array is a linear transducer array, in which a linear array of transducers is arranged along a surface, with each transducer positioned at a different height. Another example is a 2D transducer array, in which a grid of transducers is positioned at different heights to form a 2D array.

As shown in FIG. 18, the optical element 10 has a surface with one or more steps 12 formed thereon, where the height of each step on the surface of the optical element can be precisely controlled during the manufacturing process, which allows for the creation of specific acousto-optic frequency responses. The step height can be chosen to match the wavelength of RF input, creating a specific phase shift, or to provide a specific diffraction angle. The height of each step can also affect the coupling between the acoustic wave and the optical wave, which determines the efficiency and bandwidth of the acousto-optic interaction. Grinding or subtractive techniques can be applied to the surface of the optical element to form one or more steps spaced apart on the surface, where the height of each step affects the

5

acousto-optic RF frequency response. This provides a versatile and precise tool for manipulating the interaction between acoustic waves and optical waves. This technology is useful in a variety of applications, such as laser beam modulation, scanning, and frequency shifting.

In some cases, the steps 12 on the surface of the optical element can have a plurality of different heights. This can be done to create a more complex RF frequency response, which can be useful for certain applications. Transducer 13 is adhesively bonded with a thin epoxy layer 15 to the top of steps 12. This is done when the device 10 is inserted into its spot in the receptacle of FIG. 4C, applying a thin layer of epoxy 15 on top of step 13, and then by operation of vacuuming the transducer 13 to secure it to the bottom of the piston and by air pressure lowering the piston with the top of step 12 and evenly apply the epoxy to secure the transducer 13 to device 10.

By having steps with different heights, the acousto-optic device can be designed to deflect light at multiple angles or frequencies. This can be used, for example, in laser scanning systems, where the deflection angle of the incident laser beam needs to be precisely controlled.

The optical and acoustic elements in a phased array opto-acoustic device are arranged in a specific pattern to allow for precise control of the acoustic waves generated and detected. The optical elements transmit the laser beam through the sample chamber. The acoustic elements may include a phased array of transducers, which are used to control the direction and intensity of the acoustic waves.

In these applications, the optical element is made of a material that can support a propagating acoustic wave, such as a crystal or glass. The acoustic wave is created by a transducer, and its frequency is modulated by an applied RF signal. The optical element is made of a material that can support a propagating acoustic wave, such as a crystal or glass. The acoustic wave is created by a transducer, and its frequency is modulated by an applied RF signal. The height of each step affects the acousto-optic RF frequency response, is typically used in acousto-optic modulators and deflectors. One embodiment of the instant device enables a single device to work at two distinct frequencies, enabling one device to be used instead of two separate devices.

The optical element has a surface with one or more steps formed thereon, where the height of each step on the surface of the optical element can be precisely controlled during the manufacturing process, which allows for the creation of specific acousto-optic frequency responses. The step height can be chosen to match the wavelength of the incident light, creating a specific phase shift, or to provide a specific diffraction angle. The height of each step can also affect the coupling between the acoustic wave and the optical wave, which determines the efficiency and bandwidth of the acousto-optic interaction.

Grinding or subtractive techniques can be applied to the surface of the optical element to form one or more steps spaced apart on the surface, where the height of each step affects the acousto-optic RF frequency response. This provides a versatile and precise tool for manipulating the interaction between acoustic waves and optical waves. This technology is useful in a variety of applications, such as laser beam modulation, scanning, and frequency shifting.

In some cases, the steps on the surface of the optical element can have a plurality of different heights. This can be done to create a more complex RF frequency response, which can be useful for certain applications.

By having steps with different heights, the acousto-optic device can be designed to deflect light at multiple angles or

6

frequencies. This can be used, for example, in laser scanning systems, where the deflection angle of the incident laser beam needs to be precisely controlled.

FIG. 2A shows an exemplary process to form a phased-array transducer. The process includes the following operations:

- grinding an optical element to form two or more steps each with a predetermined height;
- depositing a conductive layer over the one or more steps;
- attaching one or more crystals or transducers on the one or more steps; and
- attaching electrodes to the top and bottom of each transducer.

In more details, the process of creating steps with different heights on the surface of an optical element can be done using various techniques, including etching or grinding. Etching can be used to selectively remove material from the surface, while grinding can be used to selectively remove material from certain areas of the surface. The end result is a surface with steps of varying heights that can be used to control the RF frequency response of the acousto-optic device.

The tools used to grind the optical element with the steps may vary depending on the material of the optical element and the desired precision of the steps. Some common tools used for grinding optical elements include diamond-tipped tools, abrasive wheels, and lapping/polishing pads.

Diamond-tipped tools are often used for grinding hard and brittle materials such as glass and some ceramics. These tools are made of a thin metal shank with a small diamond grit on the tip. The diamond grit is used to scratch away material from the optical element, creating the desired steps. Diamond-tipped tools can achieve high precision and smooth surface finishes.

Abrasive wheels are another common tool used for grinding optical elements. These wheels are made of abrasive particles bonded to a wheel shape. The abrasive particles can be made of materials such as silicon carbide or aluminum oxide, and the bond can be made of materials such as resin or vitrified ceramic. Abrasive wheels are often used for grinding softer materials such as plastic or some metals. These wheels can remove material quickly but may not achieve the same precision as diamond-tipped tools.

Lapping and polishing pads are used for finishing the optical element after grinding. These pads are made of a soft material such as felt or polyurethane foam and are coated with a fine abrasive material such as diamond paste. The optical element is placed on the pad and moved in a circular motion to achieve a smooth surface finish.

Other tools that may be used for grinding optical elements include grinding machines, CNC equipment, and ultrasonic machining tools. The choice of tool depends on the material of the optical element, the desired precision, and the production volume.

Cleaning of the optical element surface is an essential step to ensure the adhesion of the subsequent gold layer. The cleaning operation typically involves the following steps:

- Rinse the optical element with deionized water or a cleaning solvent to remove any loose particles or debris on the surface.

Immerse the optical element in a mild acid solution, such as hydrochloric acid or sulfuric acid, to remove any organic or inorganic contaminants. The duration of the immersion depends on the type and level of contamination and typically ranges from a few seconds to several minutes.

Rinse the optical element with deionized water to remove any residual acid and neutralize the surface.

Dry the optical element using a stream of dry nitrogen or argon gas or a cleanroom-compatible drying method such as spin-drying or vacuum-drying.

Inspect the optical element surface under a microscope or with a cleanroom-compatible surface analysis tool to ensure that the surface is free of particles, scratches, or defects that can affect the performance of the subsequent gold layer deposition.

By following these steps, the optical element surface can be prepared for the deposition of a uniform and adherent gold layer.

The height of each step on the surface of the optical element can be precisely controlled during the manufacturing process, which allows for the creation of specific acousto-optic frequency responses. The step height can be chosen to match the wavelength of the incident sound, creating a specific phase shift, or to provide a specific diffraction angle. The height of each step can also affect the coupling between the acoustic wave and the optical wave, which determines the efficiency and bandwidth of the acousto-optic interaction.

In an acousto-optic modulator, the applied RF signal modulates the frequency of the acoustic wave, which in turn modulates the phase or amplitude of the optical wave passing through the optical element. The modulation depth and frequency bandwidth of the modulator depend on the height and spacing of the steps on the optical element. The applied RF signal generates an acoustic wave that travels along the surface of the optical element, causing the incident optical beam to diffract at a specific angle. The applied RF signal modulates the frequency of the acoustic wave, which in turn modulates the phase or amplitude of the optical wave passing through the optical element.

A conductive layer is formed on the surface with the steps. In some cases, a conductive layer such as gold is deposited on the surface with the steps. This is done to allow for an electrical contact to be made with the surface, which is necessary for applying the RF signal to the acousto-optic device. The conductive layer also helps to reduce any unwanted reflections that may occur at the surface, which can affect the performance of the device.

First, a layer of nichrome is formed on the surface of the optical element since gold does not bond well with the optical element. Then a layer of gold is deposited above the nichrome layer. The conductive layer is typically deposited using a process called physical vapor deposition (PVD) or sputtering. In PVD, a thin film of gold is deposited on the surface by evaporating the metal in a vacuum chamber and allowing it to condense onto the surface. In sputtering, a plasma is used to eject gold atoms from a target material and deposit them onto the surface.

The equipment used to deposit a fine layer of gold over the steps on the optical element is called a physical vapor deposition (PVD) system. PVD is a process where a solid material is vaporized in a vacuum environment, and the resulting vapor condenses onto a substrate to form a thin film.

In this case, the gold is evaporated in a vacuum chamber using an electron beam gun or a resistive filament. The vaporized gold atoms travel in a straight line towards the substrate, where they condense and form a thin layer on the surface of the optical element. The thickness of the gold layer can be controlled by adjusting the deposition rate and the deposition time.

The PVD system typically includes a vacuum chamber, a substrate holder, a source of gold, and a means to evaporate the gold. The substrate holder is designed to hold the optical element with the steps facing upwards and is positioned in the vacuum chamber. The chamber is then evacuated to a high vacuum level, typically in the range of 10^{-6} to 10^{-7} torr, to prevent contamination of the gold layer.

The gold source is typically a solid piece of gold that is heated by an electron beam or a resistive filament. As the gold is heated, it evaporates and condenses on the surface of the optical element. The deposition rate and deposition time can be controlled by adjusting the power of the heating source and the distance between the source and the substrate.

Once the gold layer is deposited, the optical element is removed from the vacuum chamber and inspected for uniformity and thickness. The thickness of the gold layer is typically in the range of a few hundred nanometers to a few microns, depending on the application.

Overall, the PVD system is a precise and reliable method for depositing a thin layer of gold on the surface of the optical element with the steps, ensuring optimal performance of the acousto-optic deflector.

A transducer or a crystal is then affixed to each step, preferably at different heights based on the height of the steps. The crystal is secured to each step of an optical element using epoxy bonding in one embodiment. The crystal is placed in contact with the conductive layer on the surface of the optical element. Electrodes positioned on each surface of each crystal, one connected to ground and one connected to an RF signal driving the crystal.

After the conductive layer is deposited and the crystal affixed to the optical element, electrical contacts are typically made to the surface using wire bonding or other techniques. Electrodes are then connected to each side of the crystal. Energy applied to the crystal generates an acoustic wave in response to an applied RF signal, and the electrodes are used to apply the RF signal to the crystal. An RF signal is then applied to the contacts, which generates the acoustic wave that modulates the refractive index of the acousto-optic material and deflects the incident light.

The electrodes are made of a conductive material, such as gold or aluminum, and are placed on opposite sides of the crystal. When an RF signal is applied to the electrodes, it generates an acoustic wave in the crystal, which can then be used to modulate the laser beam applied to the optical element.

An RF signal applied to the crystal would generate an acoustic wave, which would propagate through the crystal and into the optical element. The acoustic wave would then modulate the refractive index of the optical element, causing it to diffract or deflect an incident beam of light.

The positioning and design of the electrodes can be critical to the performance of the acousto-optic device. The spacing between the electrodes, the shape of the electrodes, and the applied voltage all affect the frequency response of the device.

FIG. 2B shows an exemplary method to deflect a laser beam that includes:

- applying the laser beam to an optical element having one or more steps each with a predetermined height and one or more crystals or transducers on the one or more steps;
- impedance matching the electrical input of the transducers to a 50-ohm load;
- providing an electrical input to deflect the laser at the two or more frequencies; and

generating a sound field in the optical element to deflect a laser beam based on two or more frequencies.

Other methods to form an opto-acoustic deflector include: grinding an optical element to provide one or more steps each with a predetermined height;

depositing a layer of gold over the one or more steps; and attaching one or more crystals or transducers on the one or more steps.

FIG. 3 shows an exemplary tuning element that is coupled to the electrodes to match a predetermined impedance. The tuning element is used to match the predetermined impedance of the acousto-optic phased array transducers. The tuning element is typically an inductor with a predetermined coil length and a variable capacitor or a trimmer capacitor that is adjusted to match the impedance of the system. This is important to ensure maximum power transfer between the amplifier and the acousto-optic deflector, which leads to better performance and efficiency. The tuning element can be adjusted by a technician or can be automated using a feedback control loop to continuously monitor and adjust the impedance.

The tuning element is typically used to match the impedance of the acousto-optic deflector to the impedance of the driving circuit, which is often 50 ohms. This ensures maximum power transfer between the amplifier and the acousto-optic deflector. The impedance matching can help to minimize the reflection of the signal, which can cause unwanted interference and signal degradation.

The tuning element can be used to match the impedance of the acousto-optic deflector at specific RF frequencies to a 50-ohm impedance. This is typically done using a matching network or filter, which can be adjusted to achieve the desired impedance match. For example, if the deflector has an output impedance of 40 MHz and 60 MHz, a tuning element can be designed to match those frequencies to 50 ohms.

The tuning element can be implemented using various techniques, such as a lumped element filter, a distributed element filter, or a combination of both. The choice of technique depends on various factors such as the frequency range, the required bandwidth, and the physical size of the tuning element.

Once the tuning element is designed, it can be coupled to the electrodes of the acousto-optic deflector to achieve the desired impedance match. This can be done using various coupling techniques such as wire bonding or soldering. The impedance match ensures that maximum power is transferred from the RF amplifier to the acousto-optic deflector, which improves its efficiency and performance.

Opposite to the surface with the steps on the optical element is a slanted end with a compound angle to direct any reflected sound field away from the laser beam working range. This can help to reduce unwanted interference and improve the overall performance of the acousto-optic deflector. The compound angle can be designed to achieve the desired deflection angle for the laser beam while also minimizing any unwanted reflections or diffraction effects. The exact design of the slanted end will depend on the specific application and requirements of the acousto-optic deflector.

To prevent these issues, it is important to carefully control the deposition process and ensure that the gold layer is well adhered to the optical element's surface. Additionally, the amount of epoxy used should be carefully controlled and optimized to ensure strong bonding between the crystals and the surface without creating unnecessary attenuation of the acoustic waves. Quality control and testing should also be

performed to ensure that the opto-acoustic deflector meets the required specifications for performance and reliability.

To form a slanted end of the optical element with a 30 degree angle measured from a long side to a short side and a surface with a 2 degree slope, the following steps can be taken:

Obtain an optical element made of the desired material, such as germanium or tellurium dioxide (TeO₂).

Determine the dimensions of the optical element and mark the area where the slanted end will be located.

Use a precision saw or cutting tool to cut the slanted end at the desired angle. This can be done by tilting the cutting tool at a 30 degree angle relative to the long side of the optical element.

Use a precision grinding tool, such as a diamond or abrasive wheel, to grind the surface of the slanted end to achieve the desired 2 degree slope. This can be done by adjusting the angle and pressure of the grinding tool.

Inspect the surface of the slanted end to ensure that it is smooth and free of any cracks or defects.

Clean the surface of the slanted end using a gentle solvent, such as isopropyl alcohol, to remove any debris or particles.

Optionally, apply a protective coating, such as a thin layer of anti-reflection coating or a metal film, to the surface of the slanted end to improve its optical properties and prevent damage from handling or exposure to the environment.

Overall, the key to forming a slanted end with the desired angle and slope is to use precision tools and techniques to achieve the desired shape and surface quality, while minimizing any damage or stress to the optical element.

The optical element can be germanium, tellurium dioxide (TeO₂), lithium niobate, PZT, fused silica, chalcogenide glasses, glass. The choice of material for the optical element depends on various factors such as the desired optical properties, thermal and mechanical stability, and the specific application for which the element will be used.

The choice of crystal for an opto-acoustic laser system depends on the specific application and the properties of the crystal. Some of the factors that are typically considered when selecting a crystal for opto-acoustic applications include the crystal's acoustic and optical properties, as well as its thermal and mechanical stability, among others. One commonly used crystal for opto-acoustic applications is lithium niobate (LiNbO₃). LiNbO₃ has excellent acoustic properties, with a high acoustic velocity and a low acoustic attenuation, which makes it ideal for generating and detecting acoustic waves. It also has strong nonlinear optical properties, which can be used for frequency conversion and modulation of the laser beam.

Another crystal that is commonly used for opto-acoustic applications is quartz (SiO₂). Quartz has a high acoustic velocity and a low acoustic attenuation, making it ideal for acoustic wave generation and detection. It is also highly transparent in the infrared region, which is useful for many laser applications.

Other crystals that are sometimes used for opto-acoustic applications include gallium arsenide (GaAs), gallium nitride (GaN), and sapphire (Al₂O₃). These crystals have specific properties that make them suitable for certain applications, such as high-temperature stability or high optical nonlinearity.

The choice of crystal for an opto-acoustic laser system depends on the specific requirements of the application, such as the desired acoustic and optical properties, as well as the thermal and mechanical stability of the crystal.

Some commonly used materials for acousto-optic devices include:

Germanium: Germanium is a common material for acousto-optic modulators operating in the mid-infrared region due to its high refractive index and low absorption coefficient in this range.

Tellurium dioxide (TeO₂): TeO₂ is a widely used material for acousto-optic devices due to its high electro-optic coefficient and wide transparency range from UV to mid-infrared.

Lithium niobate (LiNbO₃): LiNbO₃ is a well-known electro-optic material with high electro-optic coefficients, making it a popular choice for high-speed acousto-optic modulators and deflectors.

PZT: PZT or lead zirconate titanate is a piezoelectric material with high coupling coefficients, making it an ideal choice for transducers in acousto-optic devices.

Fused silica: Fused silica has a high laser damage threshold and low coefficient of thermal expansion, making it suitable for high-power applications.

Chalcogenide glasses: These are glasses containing elements from the chalcogen group such as sulfur, selenium, and tellurium. They have high refractive indices, wide transparency ranges, and are suitable for acousto-optic devices in the mid-infrared range.

Glass: Different types of glasses can be used for acousto-optic devices depending on the specific application and desired properties. For example, borosilicate glass is commonly used for high-power applications, while crown glass is used for its high refractive index.

Next, a description of the process to form an opto-acoustic deflector is detailed. The operation includes the following:

Grinding the Optical Element: The first step is to grind the optical element to provide one or more steps, each with a predetermined height. This step involves precise grinding to create the desired step heights for optimal acousto-optic performance.

Deposition of Conductive Layer: After grinding, a layer of gold is deposited over the one or more steps of the optical element. To improve bonding of the gold to the optical layer, a layer of nichrome is first deposited on the optical element, and the gold conductive layer is subsequently formed. The gold layer provides a conductive surface that can be used for attachment of the crystals or transducers.

Attachment of Crystals or Transducers: One or more crystals or transducers are attached on the one or more steps of the optical element. These crystals or transducers generate acoustic waves that interact with light passing through the optical element and deflect it in a controlled manner. The attachment process can involve a variety of techniques, such as epoxy bonding, soldering, or mechanical clamping.

Capturing Electrical Output: Electrical signals are generated by the crystals or transducers when they are subjected to acoustic waves. These electrical signals are captured using specialized electronics designed to amplify and process them for further analysis.

Impedance Matching: The final step is to impedance match the electrical output to a 50-ohm load. This involves the use of a tuning element such as a matching network or a transformer, which helps to adjust the impedance of the electrical signal to match the required load. This step is critical to ensure maximum power transfer and minimum signal loss.

Once the impedance matching is complete, the opto-acoustic deflector is ready for use. It can be integrated into various optical systems to deflect and control light with high

precision, making it useful for a variety of applications such as laser printing, holography, and optical communication.

In the context of a transducer array with each transducer at a different height, it is possible to achieve the height difference by grinding the surface on which the transducers are mounted to create a stepped profile. This can be accomplished using precision grinding tools and techniques, such as diamond grinding or abrasive blasting.

The grinding process involves removing material from the surface in a controlled manner to create a series of steps or terraces with different heights. The transducers can then be mounted on the surface at the desired heights, with each transducer positioned on a different terrace. The height difference between the transducers can be controlled by adjusting the height and spacing of the terraces during the grinding process.

Grinding can be a precise and effective method for creating a stepped surface with controlled heights for a transducer array. The result of the grinding process forms a set of pedestals to mount transducers to the pedestal array, with at least two transducers with different heights.

Attaching a transducer to a surface of the steps can be done using an epoxy spread in an even and thin manner. This method involves applying a layer of epoxy or other adhesive material to the surface and then placing the transducer on top of the adhesive. The epoxy is then allowed to cure, creating a strong and permanent bond between the transducer and the surface.

As each transducer may be positioned at a different height, an array of spreaders can be used to apply the epoxy to the surface in a controlled and uniform manner. Each application head can be customized according to the desired height, allowing the epoxy to be applied to specific areas of the surface to create the desired stepped profile. The use of an array of spreaders, each with self adjustable heights, can provide a high degree of control and precision in the placement of the transducers, allowing for a more uniform and consistent array. However, specialized equipment is needed to create and operate the array of individually pliant spreaders so that each spreader automatically conforms to the different step heights.

The array of individually pliant spreaders can be pneumatically actuated to allow for precise control over the height of each transducer in the array. Pneumatic actuation involves using compressed air to control the movement of the spreaders and to stop them at the desired height for each surface portion.

By using pneumatic actuation with the pliant or conformal heads, the spreaders can be controlled to stop at the exact height required for each transducer, allowing for an even spread of the epoxy and a precise positioning of the bonding pressure on the transducers to ensure optimum bond between the transducer and the corresponding step on the optical element. This method can be particularly useful for creating an array with a plurality of transducers, as it allows for the process to be automated and ensures a consistent and accurate result.

The use of pneumatically actuated spreaders also offers other advantages over manual methods, such as greater speed, efficiency, and repeatability. It can also reduce the risk of human error and variability in the epoxy spreading process, which can lead to more consistent and reliable results.

Using pneumatically actuated spreaders to create a transducer array with each transducer at a different height can be a viable option for applications that require precise and uniform positioning of the transducers. The suitability of this

method will depend on the specific requirements of the application and the available resources and expertise.

Attaching the crystals or transducers to the layer of gold on the optical element can be done through several methods, including ultrasonic bonding, thermal compression bonding, or epoxy bonding.

Ultrasonic bonding involves placing the crystal or transducer onto the layer of gold and using ultrasonic waves to generate heat and create a bond between the two materials. This method is commonly used for smaller crystals and transducers.

Thermal compression bonding involves applying heat and pressure to the crystal or transducer, causing it to bond with the layer of gold. This method is commonly used for larger crystals and transducers.

Epoxy bonding involves applying a small amount of epoxy adhesive to the crystal or transducer and placing it onto the layer of gold. The adhesive is then cured, creating a strong bond between the crystal or transducer and the gold layer.

Regardless of the method used, care should be taken to ensure that the crystal or transducer is properly aligned with the gold layer to ensure optimal performance of the opto-acoustic deflector.

The thickness of the epoxy layer used to attach the crystals to the layer of gold in an opto-acoustic deflector must be as thin as possible for several reasons:

Minimizing acoustic attenuation: The epoxy layer can attenuate the acoustic wave generated by the transducer, which can reduce the deflection efficiency of the device. A thinner epoxy layer can minimize the attenuation of the acoustic wave and improve the device's performance.

Avoiding acoustic interference: The epoxy layer can also cause acoustic interference, particularly if it is too thick. This interference can result in unwanted diffraction or scattering of the acoustic wave, which can also reduce the device's performance. A thinner epoxy layer can help to avoid this problem.

Minimizing optical distortion: The epoxy layer can also introduce optical distortion due to its refractive index. This distortion can be particularly problematic if the optical element is used in a laser beam steering application where precise control of the beam direction is critical. A thinner epoxy layer can help to minimize this distortion and improve the device's performance.

Overall, a thinner epoxy layer can help to improve the efficiency, accuracy, and reliability of an opto-acoustic deflector.

The process of applying an ultra-thin layer of epoxy involves several steps, including:

Preparation: The surface of the gold layer on the optical element must be thoroughly cleaned to remove any contaminants that may interfere with the adhesion of the epoxy. This can be done using a combination of solvents and ultrasonic cleaning.

Mixing: The epoxy is typically a two-part adhesive that must be mixed together in precise proportions. This is often done using a syringe or other dispensing device to ensure accuracy.

Dispensing: Once mixed, the epoxy is dispensed onto the surface of the gold layer. To achieve an ultra-thin layer, a dispensing device with a small aperture is typically used.

Spreading: The epoxy is spread evenly across the surface of the gold layer using a micro-manipulator or other

precision tool. This must be done carefully to avoid creating air bubbles or other imperfections.

Curing: Once the epoxy has been applied, it must be cured according to the manufacturer's instructions. This typically involves heating the optical element to a specific temperature for a set amount of time.

By using precise dispensing and spreading techniques, it is possible to apply an ultra-thin layer of epoxy that is only a few microns thick. This is important for acousto-optic devices because it minimizes any interference that the epoxy layer may have on the performance of the device.

Delamination of the gold layer and epoxy failure can both be potential issues in the manufacturing process of an opto-acoustic deflector. Gold delamination can occur due to poor adhesion between the gold layer and the optical element's surface. This can be caused by inadequate cleaning of the surface before deposition, or by the use of inappropriate conditions during the deposition process. If the gold layer delaminates, it can cause the crystals to detach from the surface, resulting in the failure of the entire device. Epoxy failure can occur due to a number of factors. One issue can be improper mixing of the epoxy, leading to inconsistencies in the hardness and adhesive properties of the epoxy. Another issue can be the use of too much or too little epoxy, which can affect the bonding strength and stability of the crystals. In addition, if the epoxy layer is too thick, it can lead to acoustic wave attenuation, reducing the efficiency of the opto-acoustic deflector.

If the epoxy layer is too thick, it can create several issues in the opto-acoustic deflector. Firstly, a thick layer of epoxy can cause an uneven surface, which can affect the optical properties of the deflector. This can result in distortion, scattering, or attenuation of the laser beam passing through the deflector. Secondly, a thick layer of epoxy can increase the distance between the crystal and the gold layer, which can affect the efficiency of the acousto-optic interaction. This can result in lower deflection efficiency, higher power consumption, or increased heat generation.

Additionally, a thick layer of epoxy can cause mechanical stress on the crystal and the gold layer. As the epoxy cures, it can generate heat and shrink, which can cause the crystal or the gold layer to deform or crack. This can affect the stability, reliability, and lifetime of the opto-acoustic deflector.

To avoid these potential problems, it is important to apply a thin and uniform layer of epoxy on the steps of the deflector surface. This can be achieved by using a precision dispenser, a flat blade or a roller to spread the epoxy evenly. The thickness of the epoxy layer should be controlled within a certain range, depending on the type and viscosity of the epoxy, the height and pitch of the steps, and the required optical and mechanical properties of the deflector. Typically, the thickness of the epoxy layer can be in the range of a few micrometers to tens of micrometers, depending on the application requirements.

In one embodiment, a method for securing crystals to a gold plated optical element includes:

placing each crystal on a moveable pedestal mounted on a piston;

temporarily securing each crystal to the moveable pedestal;

applying an epoxy to a plurality of steps on a deflector surface;

placing the piston with the crystals over the plurality of steps;

actuating the piston and moving each moveable pedestal to contact the crystal with the epoxy;

releasing the crystal from the moveable pedestal; and curing the epoxy to secure the crystal to the steps.

The method for securing crystals to a gold plated optical element using epoxy involves the following. The method for securing crystals to a gold plated optical element using epoxy involves the following steps:

Placing each crystal on a moveable pedestal mounted on a piston. The crystals are carefully placed on a moveable pedestal which is mounted on a piston that is capable of moving up and down.

Temporarily securing each crystal to the moveable pedestal: To prevent the crystals from falling off during the assembly process, they are temporarily secured to the moveable pedestal using a small amount of wax or adhesive.

Applying an epoxy to a plurality of steps on a deflector surface: A small amount of epoxy is applied to a plurality of steps on the deflector surface. It is important to apply the epoxy thinly and evenly to avoid any inconsistencies in the final assembly.

Placing the piston with the crystals over the plurality of steps: The piston, with the crystals mounted on the moveable pedestals, is carefully lowered over the plurality of steps on the deflector surface.

Actuating the piston and moving each moveable pedestal to contact the crystal with the epoxy: The piston is actuated to move each moveable pedestal, and the crystals are brought into contact with the epoxy on the steps of the deflector surface.

Curing the epoxy to secure the crystal to the steps: Once the crystals are in place, the epoxy is cured. This is typically done by heating the assembly to a specific temperature for a specified amount of time. The curing process ensures that the crystals are securely attached to the deflector surface.

It is important to note that the entire assembly process should be carried out in a clean environment, free of dust and other contaminants, to avoid any potential issues with the final product. Additionally, care should be taken to ensure that the crystals are properly aligned with the deflector surface to avoid any misalignment issues during use.

Due to the steps with variable heights, the piston is a gimbal that can move in x and y axis to apply controlled pressure to the crystals and to spread the epoxy as thin as possible. The use of a gimbal allows for precise movement of the piston in both the x and y directions, which helps to ensure that each crystal is pressed evenly onto the deflector surface even where different step heights are involved, and that the epoxy is spread evenly across the steps. This is important for achieving a strong and reliable bond between the crystals and the deflector surface, as well as for ensuring that the crystal positions are aligned correctly. The gimbal can also be used to adjust the pressure and angle of the crystals, which can be important for optimizing the performance of the opto-acoustic deflector.

FIG. 4 shows an exemplary opto-acoustic laser system, which is a type of system that combines optical and acoustic techniques for a range of applications, such as sensing, imaging, and spectroscopy. Some of the main components of an opto-acoustic laser system include:

Laser source 400: A laser source is used to generate the optical radiation that interacts with the sample. Different types of lasers can be used, depending on the specific application, such as pulsed or continuous wave (CW) lasers.

Optical components: 402 Optical components are used to guide, focus, and manipulate the laser beam. These may include mirrors, lenses, polarizers, and filters.

Acoustic transducers 406: Acoustic transducers are used to generate and detect acoustic waves that are produced by the interaction of the laser beam with the sample. These can be piezoelectric transducers, optical fibers, or other types of sensors. A sample chamber is the region where the laser beam interacts with the sample. Preferably the sample chamber is inside an optical element such as element 10 of FIG. 1, but in other applications the sample chamber can be a gas cell, a liquid cell, or a solid-state sample holder, depending on the application.

Signal processing and data acquisition 420: Signal processing and data acquisition systems are used to analyze the acoustic signals generated by the interaction of the laser beam with the sample. These systems may include amplifiers, filters, and data acquisition cards.

Control electronics 422: Control electronics are used to synchronize the laser and acoustic pulses, as well as to control the various components of the system, such as the laser power, acoustic frequency, and detection settings.

The phased array opto-acoustic system is a type of opto-acoustic imaging system that uses an array of optical and acoustic elements to generate and detect acoustic waves for imaging and sensing applications.

When an RF frequency acoustic wave propagates inside an optically transparent medium, a periodic change in the refractive index occurs due to the compressions and rarefactions of the sound wave. This periodic variation produces a grating capable of diffracting an incident laser beam.

Two types of diffraction can occur:

Operation as a Raman-Nath device occurs when the laser beam enters the sound field at normal incidence and the light-sound interaction length $L < \Lambda^2/A$, where A is the laser wavelength in the medium and Λ is the sound wavelength which is analogous to the line spacing of a thin diffraction grating. Klein and Cook¹ have defined a parameter Q

$$Q = 2\pi\lambda L F^2 / n V^2$$

where F is the RF acoustic frequency, n the index of refraction, and V the acoustic velocity of the interaction medium. For a Q value of approximately 4 or less operation is said to be in the Raman-Nath region. Operation in this mode is characterized by the fact that many diffracted orders are generated and the maximum amount of light in any of the diffracted orders is limited to approximately 35 percent. This type of device is typically used as a loss modulator for intracavity applications that require light to be removed from the zero order or undiffracted beam passing straight through the device; for applications such as q-switching.

Operation as a Bragg device occurs when $L > \Lambda^2/\lambda$, or according to Klein-Cook when Q is approximately 7 or greater. In this mode the incident laser beam should enter the sound field at the Bragg angle

$$\theta_B = \lambda/2\Lambda$$

Maximum diffraction efficiency occurs when the incident laser beam and the first order diffracted beam are adjusted to form symmetrical angles with respect to the acoustic wavefronts. Depending upon design, up to 90 percent of the incident light can be diffracted into one order. Since acousto-optic devices are not 100 percent efficient, all of the light cannot be removed from the zero order. Since no light remains in the first order when the sound power is removed, the first diffracted order is used in applications such as amplitude modulation which require a high extinction ratio.

Amplitude modulation is detailed next. Beam separation or angular deviation between zero and first order is twice the Bragg angle

The separation is $\theta=2\theta_B=\lambda F/V$ proportional to acoustic frequency with a higher center frequency giving greater separation. The percentage of light I_1 in the first order or diffraction efficiency is given by

$$\eta=I_1/I=\sin^2(2.22[1/\lambda^2(L/H)M_2P_0]^{1/2})$$

Diffraction efficiency is proportional to acoustic power (Pa), acousto-optic interaction material figure of merit (M2), sound field length to height aspect ratio (UH), and inversely proportional to the square of the optical wavelength (1/0.2).

Since the diffraction process is a \sin^2 function please note that it is possible to overdrive the modulator resulting in decreased diffraction efficiency. Also note that since efficiency is inversely proportional to optical wavelength, longer wavelengths will require more RF drive power (P), and shorter wavelengths will require less RF drive power. Drive power can be determined for optical wavelengths different from the test condition wavelength by

$$P_1/P_2=k(\lambda_1/\lambda_2)^2$$

Rise time, T_r , is the time interval for the light intensity to go from 10% to 90% of maximum value in response to an acoustic step function. Rise time for a Gaussian laser beam is given by

$$T_r=0.64D/V=0.64T$$

where T is the transit time of the acoustic wave across a laser beam of diameter D.

The frequency response of an acousto-optic modulator can be characterized by the modulation index or depth of modulation (M) which can be calculated for a sinusoidal input

$$M=\exp(-\pi^2f_m^2T^2/8).$$

The 50% depth of modulation or -3 db modulation bandwidth occurs when $f_mT=0.75$ where f_m is modulation frequency.

When viewing photodiode current (see FIG. 5) on an oscilloscope, the Depth of Modulation can be calculated from the maximum intensity (Imax) and minimum intensity (Imin) readings displayed

$$M=(I_{max}-I_{min})/(I_{max}+I_{min})$$

or in terms of contrast (C) where

$$M=C=(I_{max}/I_{min})(C-1)/(C+1)$$

Optical frequency shifting can be done. Because the acoustic wave travels across the optical beam, the optical frequency undergoes a Doppler shift by an amount equal to the acoustic frequency. The Modulator can up-shift or down-shift the optical frequency depending on the orientation of the optical beam in relation to the sound field. If the laser beam enters the sound field at the Bragg angle in opposition to the direction of the sound field, the optical frequency is up-shifted (plus first order) and if the beam enters at the Bragg angle in the same direction as the sound field, the optical frequency is down-shifted (minus first order).

Deflection is detailed next. Since the angular position of the first order beam is proportional to acoustic frequency, an incremental frequency change will produce an incremental angular deviation

$$\Delta\theta=\lambda\Delta F/V$$

Total deviation is limited by the transducer electrical bandwidth.

Deflector resolution N, the number of resolvable beam positions across the total scan angle is defined as the total scan angle divided by the diffraction spread of the laser beam. For a uniformly illuminated optical beam

$$N=(\lambda\Delta F/T)/(\lambda/D)=(D/T)\Delta F=r\Delta F$$

Since r is the transit time of the acoustic wave across the beam diameter D and IIF is the RF bandwidth of the device, the product of the two is called Time Bandwidth product. Since r is the time for sound to fill or clear the optical aperture, it limits the spot position access time in a random access application.

The far field light intensity pattern for the deflected beam is a $(\sin x/x)^2$ function. By the Rayleigh Criterion the above resolution occurs when the maximum intensity at one beam position coincides with the intensity minimum at an adjacent beam position.

Changing frequency from the nominal center RF frequency to deflect the laser beam destroys the Bragg angle symmetry condition for efficient diffraction efficiency, resulting in reduced diffraction efficiency at the edges of the scan bandwidth. Incorporating acoustic phased array beam steering in the deflector design will maintain a high diffraction efficiency across the total deflection bandwidth since the acoustic wavefronts effectively rotate in response to a change in frequency to maintain the proper Bragg condition. Acoustic phased array beam steering is accomplished by mechanically cutting into the glass a series of small steps which are one half of an acoustic wavelength high at center frequency and phasing adjacent piezoelectric transducers 180 degrees apart. This technique causes the acoustic wavefronts to effectively rotate in response to a change in applied RF frequency. Because of the beam steering high uniform diffraction efficiency occurs only on one side of the zeroth order beam as the RF frequency is swept from minimum to maximum. On the opposite side of zero order the Bragg condition is satisfied for only one frequency. As the RF frequency is repetitively swept across the entire range, the position for high diffraction efficiency will change in response to mechanically rotating the deflector.

In linear scanning applications where T, total scan time, is short, a frequency gradient is produced across the optical aperture. The frequency gradient acts like a cylinder lens of fixed focal length $f_l=V T/68$, either converging or diverging the diffracted beam. If total scan time T is short, the cylinder effect will preclude bi-directional scanning. The effect can be compensated for in a unidirectional fixed scan rate system by adjusting the beam shaping optics used to expand D for resolution purposes.

Multiple beam generation is detailed next. Every acoustic frequency in an acousto-optic device defines a unique angular beam position. If several acoustic frequencies are applied simultaneously to the acousto-optic device, a corresponding number of diffracted beams will be created.

Separation between beams is

$$\Delta\theta=\Delta F/V$$

where ΔF is the acoustic frequency difference between diffracted beams. Each beam can be modulated independently but the intensities of the beams are interrelated.

One AOD deflector embodiment operates at 40 MHz and 60 MHz with high efficiency and equal intensity. Optical grade, single crystal Germanium is used for the interaction medium and Lithium Niobate piezoelectric transducers are used to generate the RF frequency acoustic traveling wave inside the Germanium.

The RF center frequency of operation is 50 MHz and the height of the sound field or active aperture is 10 mm. RF frequencies of operation are 40 MHz and 60 MHz. The Germanium optical surfaces are coated with a multi-layer dielectric antireflection coating designed for operation at 9.4 μm . In this embodiment, the pulse rise time, T_r (10% to 90%), and depth of modulation are determined by the light beam diameter D . For Model AGD-5147 with acoustic velocity $V=5.5 \text{ mm}/\mu\text{sec}$

$$T_r=117D \text{ n sec}$$

where D is in mm. Modulation response for sinusoidal inputs can be calculated as

$$M=\exp(-4.08 \times 10^{-2} D^2 f_m^2)$$

where D is beam diameter in mm and f_m is modulation frequency in MHz. For a deflector, a large beam width is required to obtain full resolution. This precludes operation as a high speed modulator.

The frequency shift range is plus or minus 40 MHz to 60 MHz depending on whether the plus or minus diffracted order is used. The Deflector produces two first order, diffracted, optical beams with an angular separation of 34.2 mrad . At 9.4 μm , a frequency deviation of 20 MHz centered at 50 MHz will produce an angular separation of 34.2 milliradians centered 85.4 milliradians from the undeflected light. The two optical beams can be individually amplitude modulated.

The optical beam is aligned parallel to the sound field and adjust the vertical position to assure that the total optical beam is in the sound field. Initially, set the device 10 optical face nearly normal to the light beam, apply 50 watts RF power at 60 MHz and rotate the device to adjust the Bragg angle so that optimum first order light intensity is obtained. Change RF frequency to 40 MHz with 50 watts RF power and note the diffraction efficiency. The 40 MHz and 60 MHz efficiencies should be close. Slightly adjust the Bragg angle condition so that equal intensities are obtained at both RF frequencies. After equal intensities are obtained, adjust RF drive power to 120 Watts. Once again check both efficiencies. A slight adjustment may be needed to obtain equal intensities. The zero and unwanted diffraction orders can be spatially filtered with an aperture.

The AOD of FIG. 1 is used in telecommunications for one or more of the following:

Optical switching: AODs can be used for high-speed optical switching in telecommunications networks. They can switch optical signals between different fibers, channels, or components of an optical network. The AOD deflects the incoming optical signal at a specific angle to select the desired output channel.

Optical beam steering: AODs can steer optical beams in different directions, allowing the precise positioning of the beam on a target. This can be useful in optical communication systems that require precise beam positioning.

Frequency shifting: AODs can shift the frequency of an optical signal, which can be used in optical communication systems for wavelength conversion, signal processing, or to overcome chromatic dispersion.

Signal modulation: AODs can be used to modulate optical signals with a high frequency acoustic wave. This can be useful in telecommunications for signal processing, amplification, or to increase the data rate of optical communication systems.

Pulse compression: AODs can be used for pulse compression of optical signals, which is useful in telecommunications for high-speed data transmission.

Optical filtering: AODs can act as optical filters, selectively transmitting certain wavelengths of light and reflecting others. This can be useful in telecommunications for signal processing and wavelength division multiplexing (WDM) applications.

Overall, AODs are useful in telecommunications for their ability to control the direction, frequency, and amplitude of optical signals, which is essential for the efficient operation of optical communication systems.

FIG. 4 shows a circuit for optical switching using phased array AOD with the following components:

Laser source: The laser source provides the input optical signal to be switched.

Beam splitter: The beam splitter splits the input optical signal into two or more output signals. Phased array AOD: The phased array AOD is used to control the direction of the optical signals by changing the phase of the acoustic wave.

Optical fiber: The optical fiber guides the output signals to their respective destinations.

Photodetectors: The photodetectors detect the output signals and convert them into electrical signals.

Switch control unit: The switch control unit controls the phased array AOD and selects the output signal to be sent to the optical fiber.

The operation of the circuit can be described as follows: The laser source generates an input optical signal that is split by the beam splitter into two or more output signals. The output signals are guided by the optical fiber to their respective destinations. The switch control unit determines which output signal is to be sent to the optical fiber. The phased array AOD is used to control the direction of the selected output signal by changing the phase of the acoustic wave. The selected output signal is sent to the optical fiber, while the other output signals are blocked. The photodetectors detect the output signals and convert them into electrical signals for further processing. In this way, the circuit provides a means for optical switching by using a phased array AOD to selectively control the direction of optical signals.

In another embodiment, a circuit for optical beam steering with phased array AOD (Acousto-Optic Deflector) consists of the following components:

Phased array AOD: It is a device that deflects an incoming optical beam by varying the acoustic frequency applied to it. The phased array AOD consists of multiple AOD elements arranged in a phased array configuration, where each element is driven by a unique frequency.

RF driver: It is a device that generates radio frequency signals that are used to drive the phased array AOD. The RF driver provides multiple frequency signals to the phased array AOD to steer the optical beam in different directions.

Optical source: It is a device that emits an optical beam that needs to be steered. The optical beam is typically a laser beam with a specific wavelength and power.

Lens system: It is a system of lenses that focuses the optical beam onto the phased array AOD. The lens system also collects the deflected beam and focuses it onto a target.

Control circuit: It is a circuit that controls the operation of the phased array AOD and RF driver. The control circuit receives commands from a user interface and generates the appropriate frequency signals to steer the optical beam in the desired direction.

User interface: It is a device that allows a user to interact with the control circuit and provide commands to steer the optical beam.

In operation, the optical beam is first focused onto the phased array AOD using the lens system. The RF driver then generates multiple frequency signals, which are applied to

the phased array AOD. The phased array AOD deflects the incoming optical beam by varying the acoustic frequency applied to it, resulting in the optical beam being steered in a specific direction. The control circuit receives commands from the user interface and generates the appropriate frequency signals to steer the optical beam in the desired direction. The deflected beam is then collected by the lens system and focused onto a target. This circuit can be used in various applications, including laser scanning microscopy, laser marking, and laser cutting, where precise optical beam steering is required.

In another embodiment, a circuit for frequency shifting using phased array acousto-optic deflectors (AODs) typically consists of the following components:

AODs: Phased array AODs are used to shift the frequency of the optical signal. They work by diffracting the incident light beam into different orders, with each order being shifted in frequency relative to the incident beam. By properly controlling the phase of the acoustic waves in the AODs, the different frequency-shifted orders can be selectively transmitted or blocked.

Laser source: A coherent light source such as a laser is used to generate the optical signal that needs to be frequency shifted.

RF driver: An RF driver is used to generate the acoustic waves in the AODs. The RF driver typically consists of a high-frequency signal generator and a power amplifier to amplify the signal.

Optical couplers: Optical couplers are used to couple the incident and frequency-shifted optical signals into and out of the AODs.

Control electronics: Control electronics are used to control the RF driver and the phase of the acoustic waves in the AODs. The control electronics may include a microcontroller or a digital signal processor.

In operation, the laser source generates an incident optical signal, which is coupled into the AODs through the optical couplers. The RF driver generates an acoustic wave that travels through the AODs, causing the incident optical signal to be diffracted into different orders, each shifted in frequency relative to the incident beam. By properly controlling the phase of the acoustic waves in the AODs using the control electronics, the different frequency-shifted orders can be selectively transmitted or blocked. The frequency-shifted optical signal can then be coupled out of the AODs through the optical couplers and used for further processing or transmission.

In yet another embodiment, a circuit for signal modulation with phased array AOD typically involves the following components:

A signal source: This is a device that generates an electrical signal, such as a voltage or current, that represents the information to be transmitted.

An AOD driver: This is a device that converts the electrical signal from the signal source into a high-frequency acoustic signal that is used to drive the AOD.

A phased array AOD: This is an optical device that uses high-frequency acoustic waves to diffract and steer an incident optical beam. The phased array AOD is typically composed of an array of individual AOD elements that can be controlled independently to achieve complex beam steering patterns.

An optical modulator: This is a device that modulates the intensity, phase, or polarization of an optical beam in response to an electrical signal. The modulated optical beam is used to carry the information from the signal source.

A beam splitter: This is an optical device that splits an incident optical beam into two or more beams. One of the split beams is directed to the optical modulator, while the other beam serves as a reference beam.

A detector: This is a device that measures the intensity or phase of the modulated optical beam. The detected signal is used to extract the information from the signal source.

The signal modulation circuit operates by applying the electrical signal from the signal source to the AOD driver, which generates a high-frequency acoustic signal that drives the phased array AOD. The phased array AOD diffracts and steers the incident optical beam in a predetermined pattern, which is modulated by the optical modulator in response to the electrical signal. The modulated optical beam is split by the beam splitter, and the modulated component is detected by the detector. The detected signal is processed to extract the information from the signal source.

In a further embodiment, a circuit for pulse compression with phased array AOD typically involves a series of components that work together to manipulate and shape the pulses of light produced by a laser source. The basic components of such a circuit include:

Laser Source: This is the source of the initial laser pulses, which are typically relatively long in duration.

Optical Amplifier: This component amplifies the laser pulses to increase their energy.

Modulator: This component can be used to shape the pulses of light produced by the laser source, for example by modulating their amplitude or frequency.

Delay Line: This is a section of optical fiber or other material that is used to delay the pulses of light by a precise amount.

Phased Array AOD: This component is used to split the delayed pulses into multiple smaller pulses with different frequencies. The AODs are typically controlled by a computer or other digital device that can precisely tune the frequencies and timing of the resulting pulses.

Optical Combiner: This component combines the multiple pulses produced by the AODs into a single compressed pulse with a much shorter duration than the original laser pulse.

The circuit works by amplifying the laser pulses, shaping them as desired, delaying them by a precise amount, splitting them into multiple smaller pulses with different frequencies using phased array AODs, and then recombining them into a single, highly compressed pulse. This technique can be used to produce very high-intensity pulses of light that are useful for a wide range of applications, including laser machining, scientific research, and medical imaging.

In yet another embodiment, a circuit for optical filtering with phased array AOD can be designed using a combination of a laser source, a phased array AOD, and a photodetector. The basic principle behind this circuit is to control the optical frequency of the laser beam by applying a frequency shift to it through the AOD, and then filtering out the undesired frequency components from the resulting output beam using a narrowband optical filter. The laser source generates a beam of light, which is then directed towards the AOD. The AOD uses the piezoelectric effect to control the diffraction of the laser beam, which results in a frequency shift of the beam. The AOD can be controlled by applying a specific voltage pattern to the piezoelectric crystal, which can create a phased array of frequency-shifted beams. After passing through the AOD, the output beam contains frequency components that are shifted by a certain amount from the original frequency of the laser beam. To filter out the undesired frequency components, a narrowband optical

filter can be placed in the path of the output beam. The filter has a specific passband that allows only the desired frequency components to pass through, while blocking all others. Finally, the filtered beam is detected by a photodetector, which converts the optical signal into an electrical signal. This circuit can be used for a wide range of applications, including optical communication systems, spectroscopy, and laser-based sensing.

In one embodiment, a telecommunications system includes a phased array acousto-optic device configured to modulate an optical beam according to an input signal, wherein the phased array acousto-optic device includes multiple transducers that can be individually addressed to generate different optical beam angles and frequencies, and a control circuit that generates the input signal to selectively activate the transducers to steer the optical beam in a desired direction.

In another embodiment, a telecommunications system includes: a phased array acousto-optic device configured to deflect an optical beam by an angle that depends on the frequency of an input electrical signal, wherein the phased array acousto-optic device includes multiple transducers that can be individually addressed to generate different optical beam angles and frequencies, and a control circuit that generates the input signal to selectively activate the transducers to steer the optical beam in a desired direction.

In yet another embodiment, a telecommunications system includes a phased array acousto-optic device configured to switch an optical beam between two or more output ports by applying an input electrical signal that varies the frequency of the optical beam, wherein the phased array acousto-optic device includes multiple transducers that can be individually addressed to generate different optical beam angles and frequencies, and a control circuit that generates the input signal to selectively activate the transducers to steer the optical beam to the desired output port.

A telecommunications system comprising: a phased array acousto-optic device configured to modulate an optical beam with a signal having a frequency in the radio frequency (RF) or microwave range, wherein the phased array acousto-optic device includes multiple transducers that can be individually addressed to generate different optical beam angles and frequencies, and a control circuit that generates the RF or microwave signal to modulate the optical beam in a desired manner.

In one embodiment, a telecommunications system comprising: a phased array acousto-optic device configured to compress an optical pulse by applying an input electrical signal that varies the frequency of the optical beam, wherein the phased array acousto-optic device includes multiple transducers that can be individually addressed to generate different optical beam angles and frequencies, and a control circuit that generates the input signal to selectively activate the transducers to compress the optical pulse to a desired duration.

In the context of optics and telecommunications, modulation refers to the process of intentionally modifying a signal (e.g., light) by varying one or more of its properties, such as amplitude, frequency, or phase. This can be used for a variety of purposes, including deflection and shifting of the signal. For example, in acousto-optic modulation, a signal is deflected or shifted by using an AOD to apply a varying acoustic wave to a crystal, which in turn alters the refractive index and deflects or shifts the light passing through it. Similarly, in electro-optic modulation, a voltage is applied to a crystal to change its refractive index and modulate the light passing through it. These types of modulation can be used in

a variety of applications, such as telecommunications, signal processing, and laser machining.

Other uses are contemplated. For example, the device can be used in laser modulators and deflectors which are devices used in laser systems to modify the behavior of laser beams. The laser modulator is a device that changes the properties of a laser beam as it propagates through a medium. It can be used to control the intensity, phase, or polarization of the beam. The modulators can be made using materials that have nonlinear optical properties, such as lithium niobate, which allows for the manipulation of the laser beam. The laser deflector is a device that changes the direction of a laser beam. It can be used to steer the beam to a particular location or to scan the beam over a surface.

The invention has been described with reference to the preferred embodiments. Obviously, modifications and alterations will occur to others upon reading and understanding the preceding detailed description. It is intended that the invention be construed as including all such modifications and alterations insofar as they come within the scope of the appended claims or the equivalents thereof.

What is claimed is:

1. A telecommunication system, comprising:
 - a laser to generate an optical beam;
 - lens coupled to the laser;
 - a phased array acousto-optic device configured to modulate the optical beam according to an input signal, the device having an optical element having a surface with one or more steps formed thereon; a conductive layer formed on the surface with the steps; one or more crystals secured to each step, and electrodes positioned on each surface of each crystal; and
 - a controller coupled to the phased array acousto-optic device to control the laser beam and communicate data over the laser beam.
2. The system of claim 1, comprising a tuning element to match a predetermined impedance.
3. The system of claim 1, comprising a tuning element providing an output impedance of 50 ohms.
4. The system of claim 1, comprising a tuning element including inductive and capacitive passive components.
5. The system of claim 1, comprising tuning element comprises 1:1 balun, 4:1 transformer, a capacitor, and an inductor.
6. The system of claim 1, wherein the optical element comprises a slanted end.
7. The system of claim 6, wherein the slanted end comprises a compound angle to move reflected sound field out of a laser beam working range.
8. The system of claim 1, wherein the slanted end forms a 30 degree angle measured from a long side of the optical element to a short side of the optical element.
9. The system of claim 1, wherein a surface of the slanted end comprises a 2 degree slope.
10. The system of claim 1, wherein the optical element comprises germanium, tellurium dioxide (TeO₂), lithium niobate, PZT, fused silica, chalcogenide glasses, glass.
11. The system of claim 1, wherein the tuning element matches a deflector output impedance at 40 MHz and at 60 MHz to a 50 ohm impedance.
12. The method of claim 11, comprising matching the input of the transducers to a predetermined impedance.
13. The method of claim 11, comprising providing a tuning element coupled to the transducers with an output impedance of 50 ohms.
14. The method of claim 11, comprising a tuning element including inductive and capacitive passive components.

15. The method of claim 11, comprising tuning element comprises a 1:1 balun, a 4:1 transformer, a capacitor, and an inductor.

16. The method of claim 11, wherein the optical element comprises a slanted end, wherein the slanted end comprises 5 a compound angle to move reflected sound field out of a laser beam working range, wherein the slanted end forms a 30 degree angle measured from a long side of the optical element to a short side of the optical element, and wherein a surface of the slanted end comprises a 2 degree slope. 10

17. The method of claim 11, wherein the optical element comprises germanium, tellurium dioxide (TeO₂), lithium niobate, PZT, fused silica, chalcogenide glasses, glass.

18. The system of claim 1, wherein the tuning element matches a deflector output impedance at 40 MHz and at 60 15 MHz to a 50 ohm impedance.

19. A method to communicate data, comprising:
receiving data and generating a laser beam responsive to the data;
applying the laser beam to an optical element having one 20 or more steps each with a predetermined height and one or more crystals or transducers on the one or more steps;
impedance matching the electrical input of the transducers to a predetermined load; 25
providing an electrical input to deflect the laser at the two or more frequencies;
generating a sound field in the optical element to deflect a laser beam based on two or more frequencies; and
communicating data with the laser beam over a fiber optic 30 cable.

* * * * *