



US011829011B1

(12) **United States Patent**
Le et al.

(10) **Patent No.:** **US 11,829,011 B1**
(45) **Date of Patent:** **Nov. 28, 2023**

(54) **ROBOTIC SYSTEM FOR ACOUSTO-OPTIC TRANSDUCER BONDING**

(71) Applicants: **Khanh Le**, Bellwood, IL (US); **John Lekavich**, Bellwood, IL (US); **Bao Tran**, Saratoga, CA (US)

(72) Inventors: **Khanh Le**, Bellwood, IL (US); **John Lekavich**, Bellwood, IL (US); **Bao Tran**, Saratoga, CA (US)

(73) Assignee: **IntraAction Corp.**, Bellwood, IL (US)

(*) Notice: Subject to any disclaimer, the term of this patent is extended or adjusted under 35 U.S.C. 154(b) by 0 days.

(21) Appl. No.: **18/332,714**

(22) Filed: **Jun. 10, 2023**

(51) **Int. Cl.**
G02F 1/33 (2006.01)
G02F 1/29 (2006.01)
B25J 13/08 (2006.01)
B25J 15/06 (2006.01)

(52) **U.S. Cl.**
CPC **G02F 1/33** (2013.01); **B25J 13/085** (2013.01); **G02F 1/292** (2013.01); **B25J 15/0616** (2013.01)

(58) **Field of Classification Search**
CPC . G02F 1/33; G02F 1/292; B25J 13/085; B25J 15/0616
USPC 359/237, 298, 305
See application file for complete search history.

(56) **References Cited**

U.S. PATENT DOCUMENTS

3,798,746 A * 3/1974 Alphonse G02F 1/11 228/208
3,867,108 A * 2/1975 Alphonse G02F 1/33 428/629

5,165,104 A 11/1992 Weverka
7,602,822 B2 10/2009 Lizotte
7,697,195 B2 4/2010 Hill
11,135,680 B2 10/2021 Wuest
11,479,892 B2 10/2022 Schultz
2007/0215575 A1 9/2007 Gu
2015/0338718 A1* 11/2015 Zhang G02F 1/33 359/305
2018/0299745 A1* 10/2018 Morse G02F 1/33
2020/0298344 A1 9/2020 Sakamoto

FOREIGN PATENT DOCUMENTS

WO WO2022018146 A1 1/2022

OTHER PUBLICATIONS

Nandy, Jyotirmoy & Sarangi, Hrushikesh & Sahoo, Seshadev. (2019). A Review on Direct Metal Laser Sintering: Process Features and Microstructure Modeling. *Lasers in Manufacturing and Materials Processing*. 6. 10.1007/s40516-019-00094-y.
RP Photonics Encyclopedia, Acousto-optic modulators, explained by RP Photonics Encyclopedia, Mar. 21, 2022 at https://www.rp-photonics.com/acousto_optic_modulators.html—printed Mar. 27, 2023.
Casimer DeCusatis, Ph.D, Lasers light the way toward quantum computing, *Laser Focus World* at <https://www.laserfocusworld.com/print/content/14235087>, printed Mar. 29, 2023.

(Continued)

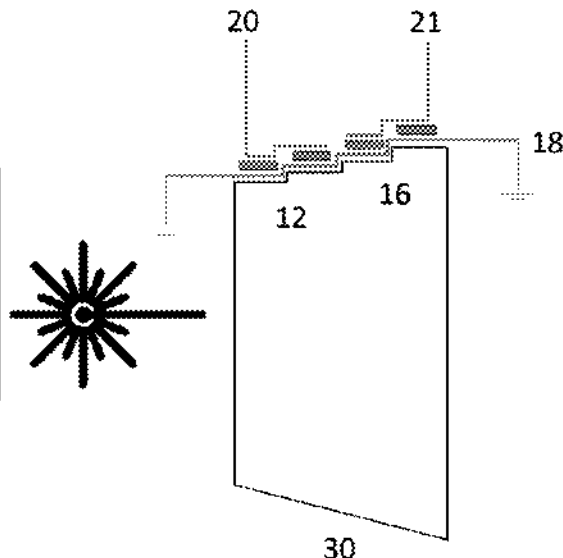
Primary Examiner — Tuyen Tra
(74) *Attorney, Agent, or Firm* — PatentPC; Bao Tran

(57) **ABSTRACT**

An acousto-optic deflector includes an optical element having a surface with one or more steps formed thereon; a conductive layer formed on the surface with the steps; one or more crystals secured to each step; and electrodes positioned on each surface of each crystal.

11 Claims, 7 Drawing Sheets

activating a robot arm within a vacuum chamber
positioning a vacuum gripper of the robot arm to pick up a transducer
reducing the temperature within the vacuum chamber using the temperature control system
applying indium epoxy onto bonding surfaces of the transducer and an acousto-optics device base using an indium epoxy dispenser
monitoring the applied force and torque during the bonding process using one or more force or torque sensors
placing the bonded transducer onto the curing station within the vacuum chamber
holding the transducer on the curing station until the indium epoxy is fully cured



(56)

References Cited

OTHER PUBLICATIONS

Hamamatsu, Laser Scanning Microscope at <https://www.hamamatsu.com/eu/en/applications/life-sciences/laser-scanning-microscope.html>, printed Mar. 29, 2023.

McCarron, DJ, A Guide to Acousto-Optic Modulators, Dec. 7, 2007.

John Lekavich, Basics of Acousto-Optic Devices, Lasers & Applications Apr. 1986.

Vijay Iyer et al, Compensation of spatial and temporal dispersion for acousto-optic multiphoton laser-scanning microscopy, Journal of Biomedical Optics 8(3), 460-471 (Jul. 2003).

AA Opto-Electronics, Acousto-optic Theory Application Notes, www.aaoptoelectronic.com, printed Mar. 27, 2023.

* cited by examiner

FIG. 1A

activating a robot arm within a vacuum chamber
positioning a vacuum gripper of the robot arm to pick up a transducer
reducing the temperature within the vacuum chamber using the temperature control system
applying Indium epoxy onto bonding surfaces of the transducer and an acousto-optica device base using an Indium epoxy dispenser
monitoring the applied force and torque during the bonding process using one or more force or torque sensors
placing the bonded transducer onto the curing station within the vacuum chamber
holding the transducer on the curing station until the Indium epoxy is fully cured

FIG. 1B

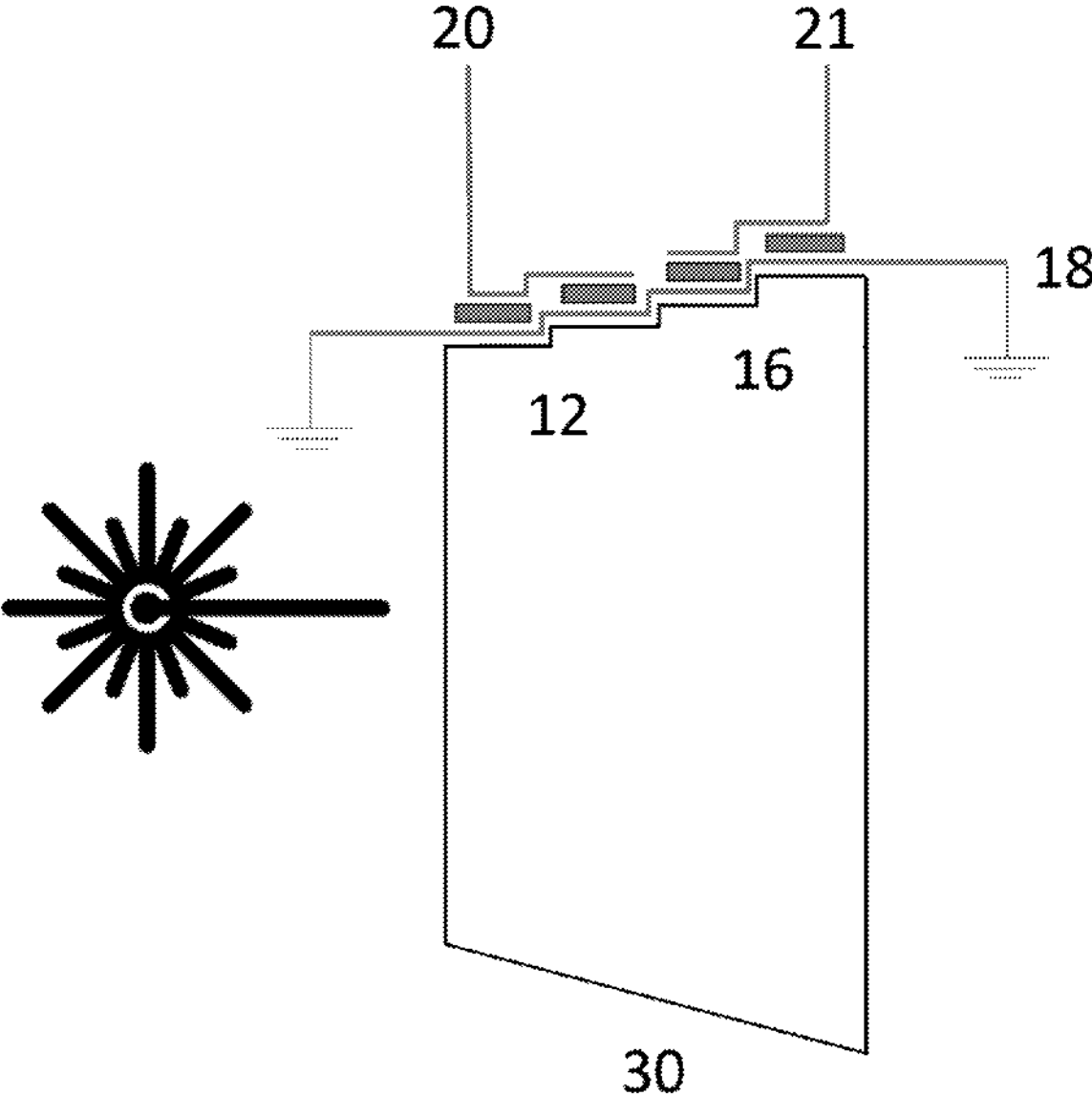


FIG. 1C

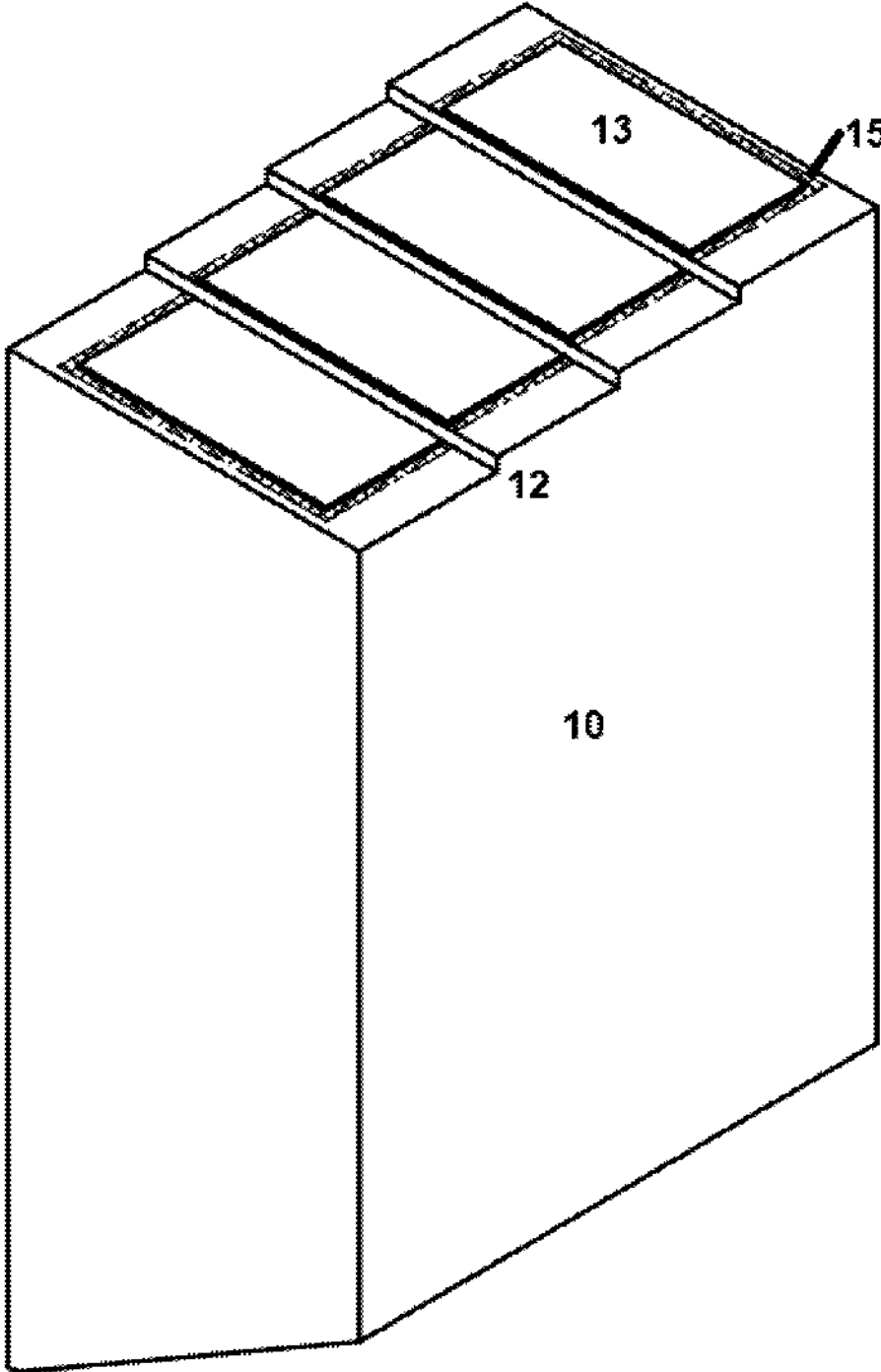


FIG. 2A

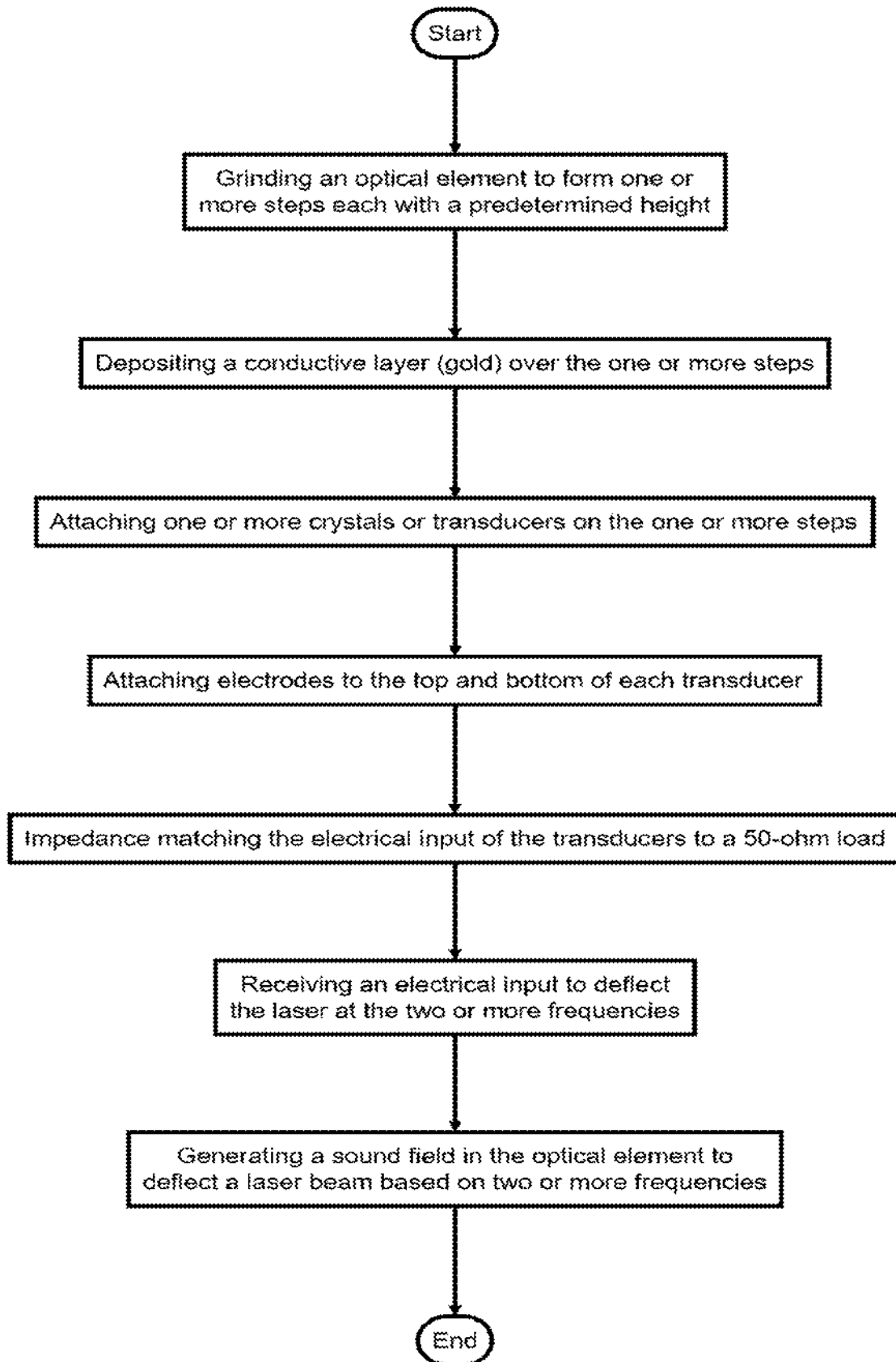


FIG. 2B

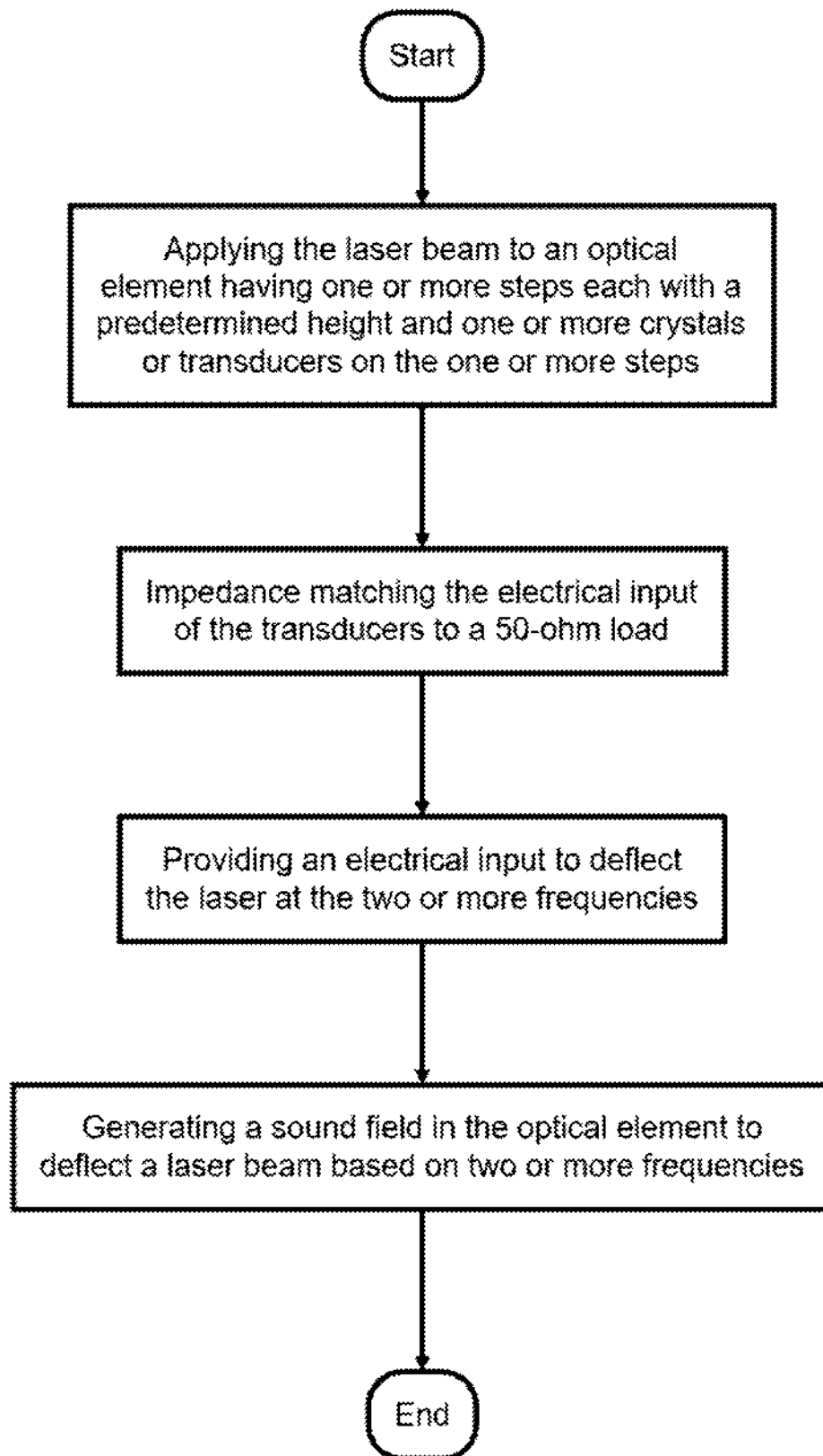


FIG. 3

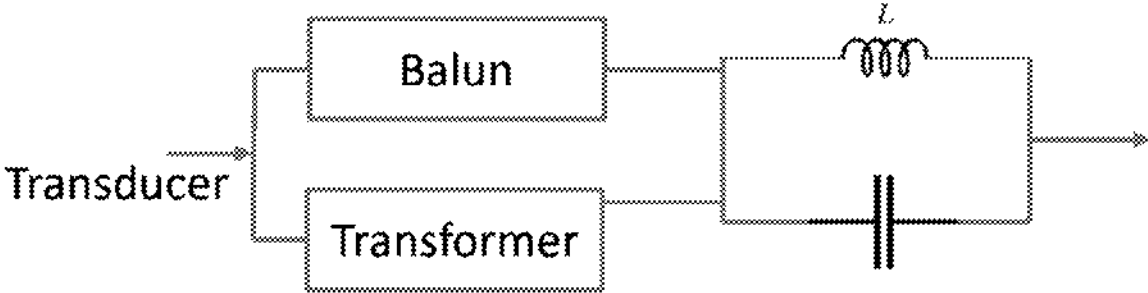
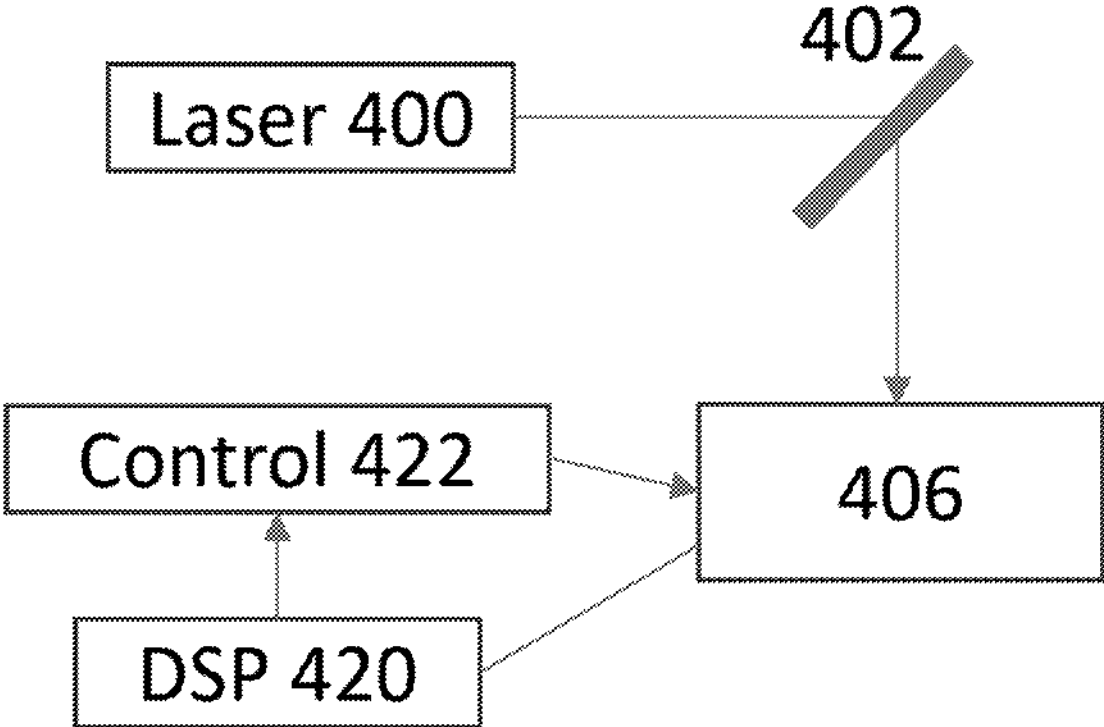


FIG. 4



ROBOTIC SYSTEM FOR ACOUSTO-OPTIC TRANSDUCER BONDING

This application claims priority to co-pending, commonly filed applications on Apr. 7, 2023 with Ser. Nos. 18/132,025, 18/132,034, 18/132,047, 18/132,054, 18/132,058, 18/132,064, 18/132,069, 18/132,070, 18/132,074, the contents of which are incorporated by reference.

BACKGROUND

The present invention relates to an acousto-optic transducer bonding techniques.

An acousto-optic deflector (AOD) is a device that can steer a laser beam in a specific direction through the use of an acoustic wave. In the context of acousto-optic (AO) devices, bonding the transducer to the AO base is a critical step in the manufacturing process. The transducer is responsible for converting electrical signals into acoustic waves, which interact with the optical signal passing through the AO device. The quality of the bond between the transducer and the AO base directly affects the performance and reliability of the AO device. The AOD consists of an acousto-optic crystal, usually made of an optical material like germanium, tellurite, or silica, that is designed to propagate an acoustic wave through the crystal generated by an RF signal. When a laser beam is directed through the crystal, the acoustic wave creates a spatially varying refractive index in the crystal, which diffracts the laser beam in a specific direction.

The deflection angle of the laser beam is determined by the frequency and amplitude of the RF signal used to generate the acoustic wave. By varying these parameters, the deflection angle of the laser beam can be adjusted to scan a specific area or to perform a specific task.

SUMMARY

In one aspect, a robot apparatus for securing a transducer to an AO base in a vacuum environment includes:

- a. a robotic arm system capable of operating in a vacuum chamber;
- b. a vacuum gripper attached to the robotic arm system, configured to securely hold the transducer;
- c. a temperature control system integrated into the vacuum chamber, capable of reducing the chamber's temperature;
- d. a dispensing system attached to the robotic arm system, configured to apply Indium epoxy onto bonding surfaces of the transducer and the AO base;
- e. force/torque sensors installed at the end-effector of the robotic arm system, configured to measure applied force and torque during the bonding process; and
- f. a curing station within the vacuum chamber, providing controlled environmental conditions for curing the Indium epoxy.

In another aspect, a method for securing a transducer to an AO base in a vacuum environment using a robot includes:

- a. activating the robot within the vacuum chamber;
- b. positioning the vacuum gripper of the robot apparatus to pick up the transducer;
- c. reducing the temperature within the vacuum chamber using the temperature control system;
- d. applying Indium epoxy onto bonding surfaces of the transducer and the AO base using the dispensing system;

- e. monitoring the applied force and torque during the bonding process using the force/torque sensors;
- f. placing the bonded transducer onto the curing station within the vacuum chamber; and
- g. holding the transducer on the curing station until the Indium epoxy is fully cured.

Indium is a soft, malleable metal that exhibits excellent bonding characteristics at relatively low temperatures. The process involves the deposition of a thin layer of indium on the bonding surfaces of the transducer and the AO base, followed by applying pressure and heating to facilitate the bonding.

During the bonding process, the indium layer acts as a compliant interface, allowing for intimate contact and adhesion between the transducer and the AO base. The low-temperature nature of the indium bonding process helps prevent thermal damage to sensitive components and ensures the integrity of the materials involved.

The advantages of using low-temperature indium bonding for transducer-to-AO base bonding include:

- Temperature Compatibility:** The low-temperature bonding process is compatible with a wide range of materials used in AO devices, including delicate semiconductors and optical elements that are sensitive to heat.
- High Bond Strength:** Indium bonding forms a strong bond between the transducer and the AO base, ensuring mechanical stability and reliability of the device even under demanding operational conditions.
- Hermetic Seal:** The indium bond can provide a hermetic seal, preventing the ingress of contaminants or moisture, which can degrade the performance and longevity of the AO device.

Electrical Conductivity: Indium is an excellent conductor of electricity, allowing for efficient electrical connections between the transducer and the AO base.

Stress Relief: The compliant nature of the indium layer helps to alleviate stress and minimize the risk of damage caused by differential thermal expansion between the transducer and the AO base.

The system's application of low-temperature indium bonding offers a reliable and versatile method for securing transducers to AO bases, ensuring optimal performance and long-term stability of AO devices.

In another aspect, an acousto-optic deflector includes an optical element having a surface with one or more steps formed thereon; a conductive layer formed on the surface with the steps; one or more crystals secured to each step; and one or more electrodes positioned on the surface of the one or more crystals.

Implementations of the above aspect can include one or more of the following. A tuning element can be used to match a predetermined impedance. The tuning element can provide an output impedance of 50 ohms for one use case. The tuning element can have inductive and capacitive passive components. In one embodiment, the tuning element can be a 1:1 balun, 4:1 transformer, a capacitor, and an inductor. The optical element comprises a slanted end. The tuning element matches a deflector output impedance at 40 MHz and at 60 MHz to a 50 ohm impedance. The slanted end can have a compound angle designed to drive the reflected sound field out of a laser beam working range so that no reflected sound wave can impact laser performance. In one specific design, the slanted end forms a 30 degree angle measured from a long side of the optical element to a short side of the optical element and the surface of the slanted end has a 2 degree slope. The optical element can be

germanium, tellurium dioxide (TeO₂), lithium niobate, PZT, fused silica, chalcogenide glasses, or glass, for example.

In another aspect, a method to form a phased-array transducer includes

- grinding an optical element to form two or more steps each with a predetermined height;
- depositing a conductive layer (gold) over the one or more steps;
- attaching one or more crystals or transducers on the one or more steps; and
- attaching electrodes to the top and bottom of each transducer.

Implementations of the above aspect can include one or more of the following. The method includes matching the input of the transducers to a predetermined impedance. A tuning element can be connected to the transducers with an output impedance of 50 ohms. The tuning element includes inductive and capacitive passive components. The tuning element can have a 1:1 balun, a 4:1 transformer, a capacitor, and an inductor. The optical element can have a slanted end, wherein the slanted end comprises a compound angle to move reflected sound field out of a laser beam working range. The slanted end forms a 30 degree angle measured from a long side of the optical element to a short side of the optical element. A surface of the slanted end has a 2 degree slope. The optical element comprises germanium, tellurium dioxide (TeO₂), lithium niobate, PZT, fused silica, chalcogenide glasses, glass. The tuning element matches a deflector output impedance at 40 MHz and at 60 MHz to a 50 ohm impedance.

In another aspect, a method to deflect a laser beam includes:

- applying the laser beam to an optical element having one or more steps each with a predetermined height and one or more crystals or transducers on the one or more steps;
- impedance matching the electrical input of the transducers to a 50-ohm load;
- providing an electrical input to deflect the laser at the two or more frequencies; and
- generating a sound field in the optical element to deflect a laser beam based on two or more frequencies.

In a further aspect, a method to form an opto-acoustic deflector includes

- grinding an optical element to provide one or more steps each with a predetermined height;
- depositing a layer of gold over the one or more steps; and
- attaching one or more crystals or transducers on the one or more steps.

Implementations of the above aspect can include one or more of the following. The method includes tuning the electrical output for 40 MHz and 60 MHz output. A slanted end is formed on the optical element with a compound angle to move reflected sound field out of a laser beam working range. The slanted end forms a 30 degree angle measured from a long side of the optical element to a short side of the optical element. A surface of the slanted end comprises a 2 degree slope.

In another aspect, a method to form and to operate an opto-acoustic deflector includes:

- grinding an optical element to form one or more steps each with a predetermined height;
- depositing a conductive layer (gold) over the one or more steps;
- attaching one or more crystals or transducers on the one or more steps;

attaching electrodes to the top and bottom of each transducer;

impedance matching the electrical input of the transducers to a 50-ohm load;

receiving an electrical input to deflect the laser at the two or more frequencies; and

generating a sound field in the optical element to deflect a laser beam based on two or more frequencies.

Implementations can include one or more of the following. The method can include tuning the electrical output for 40MHz and 60MHz output. The method includes forming a slanted end on the optical element. The method further includes forming a compound angle to move reflected sound field out of a laser beam working range. The slanted end forms a 30 degree angle measured from a long side of the optical element to a short side of the optical element. A surface of the slanted end comprises a 2 degree slope. The method includes grinding the optical element, which can be germanium, tellurium dioxide (TeO₂), lithium niobate, PZT, fused silica, chalcogenide glasses, glass, among others.

Advantages of the system may include one or more of the following. The deflector can operate with two distinct frequencies, for example at 40 and 60 MHz, resulting in a single device that can do the job of two. The deflector thus is smaller, lower power, and higher matching behavior over versions that require two separate deflectors each geared toward a particular frequency. The acousto-optic deflector is a versatile device that provides precise and efficient control over the direction of a laser beam. Its ability to scan and steer laser beams in a specific direction makes it an essential tool in various applications such as microscopy, laser printing, and laser communication.

BRIEF DESCRIPTION OF THE DRAWINGS

FIG. 1A shows an exemplary robotic process to form an acoustic-opto device.

FIG. 1B-1C show an exemplary phased array opto-acoustic deflector.

FIG. 2A-2B show exemplary processes for forming and using the deflector of FIG. 1A.

FIG. 3 shows an exemplary tuning element that is coupled to the electrodes to match a predetermined impedance.

FIG. 4 shows an exemplary opto-acoustic laser system.

DESCRIPTION

FIG. 1A shows an exemplary a method for securing a transducer to an AO base in a vacuum environment using a robot. The method includes the following:

- a. activating the robot apparatus within the vacuum chamber;
- b. positioning the vacuum gripper of the robot apparatus to pick up the transducer;
- c. reducing the temperature within the vacuum chamber using the temperature control system;
- d. applying Indium epoxy onto bonding surfaces of the transducer and the AO base using the dispensing system;
- e. monitoring the applied force and torque during the bonding process using the force/torque sensors;
- f. placing the bonded transducer onto the curing station within the vacuum chamber; and
- g. holding the transducer on the curing station until the Indium epoxy is fully cured.

The robot apparatus for securing a transducer to an AO base in a vacuum environment, can include the following:

5

- a. a robotic arm system capable of operating in a vacuum chamber;
- b. a vacuum gripper attached to the robotic arm system, configured to securely hold the transducer;
- c. a temperature control system integrated into the vacuum chamber, capable of reducing the chamber's temperature;
- d. a dispensing system attached to the robotic arm system, configured to apply Indium epoxy onto bonding surfaces of the transducer and the AO base;
- e. force/torque sensors installed at the end-effector of the robotic arm system, configured to measure applied force and torque during the bonding process; and
- f. a curing station within the vacuum chamber, providing controlled environmental conditions for curing the Indium epoxy.

Low-temperature indium bonding is a technique used to securely attach transducers to the acousto-optic (AO) base or substrate. This bonding method offers several advantages, including a strong and reliable bond, low-temperature processing, and compatibility with delicate or temperature-sensitive components. Here is a description of the process involved in low-temperature indium bonding of transducers to the AO base:

Surface Preparation: The first step in the bonding process is to prepare the surfaces of both the transducer and the AO base. The surfaces need to be clean, free from contaminants, and flat to ensure proper bonding. Typically, a combination of cleaning methods such as solvent cleaning, ultrasonic cleaning, and plasma cleaning is employed to achieve the desired surface cleanliness.

Indium Deposition: A thin layer of indium is deposited onto the bonding surface of either the transducer or the AO base. This can be accomplished through various techniques, such as thermal evaporation or sputtering. The indium layer ensures a uniform and controlled bonding material between the transducer and the base.

Alignment: The transducer is carefully aligned with the AO base to ensure proper positioning and alignment of the bonding areas. Precision alignment is crucial for optimal acousto-optic performance and reliable bonding.

Low-Temperature Bonding: Once the alignment is achieved, the transducer and the AO base are brought into contact. The indium layer acts as the bonding agent between the two surfaces. The bonding process is conducted at a relatively low temperature, typically below the melting point of indium (156.6° C.), to prevent damage to temperature-sensitive components and ensure compatibility with the substrate material.

Pressure and Time: To facilitate the bonding process, a controlled amount of pressure is applied to the transducer and AO base. This pressure helps establish intimate contact between the surfaces and ensures the formation of a strong bond. The duration of the bonding process may vary depending on the specific requirements and materials involved.

Bonding Characterization: After the bonding process is complete, the bond strength and quality are evaluated. Various techniques such as mechanical testing, shear testing, or optical inspection may be employed to assess the integrity of the bond.

The low-temperature indium bonding technique offers several advantages in the assembly of AO devices. It enables the bonding of delicate components without subjecting them to high temperatures, minimizing the risk of thermal damage. Additionally, the use of indium as the bonding material

6

provides excellent adhesion, good thermal conductivity, and electrical conductivity, ensuring a reliable and efficient bond.

This bonding method is commonly employed in the fabrication of AO devices, such as AO modulators, deflectors, and frequency shifters. It enables the secure attachment of transducers to the AO base, ensuring precise and stable operation of the device in various applications, including laser systems, optical communications, and spectroscopy.

To secure the transducer to the AO base using a robot in a vacuum environment, the following process can be followed:

Vacuum Chamber Setup: Set up a vacuum chamber suitable for the bonding process. Ensure that the chamber is clean and free from any contaminants that may affect the bonding quality.

Transducer and AO Base Placement: Place the AO base inside the vacuum chamber, ensuring its proper positioning and alignment. The transducer, with the thin film transducer already deposited on its surface, is also introduced into the chamber.

Robot Manipulator: Utilize a robotic arm or manipulator designed for vacuum operations. The robot should be equipped with appropriate end-effectors or grippers capable of securely handling the transducer and applying controlled pressure during the bonding process.

Robot Calibration: Calibrate the robot's position and movements to ensure precise handling and alignment of the transducer with the AO base. This calibration process may involve using vision systems or sensors to provide feedback and aid in accurate positioning.

Alignment and Contact: Use the robot to align the transducer with the AO base, ensuring proper alignment of the bonding areas. The robot should carefully bring the transducer into contact with the base.

Pressure Application: Once the transducer is in contact with the AO base, the robot applies a controlled amount of pressure to facilitate the bonding process. The pressure should be sufficient to establish intimate contact between the surfaces without damaging the delicate components.

Bonding Verification: After the bonding process, the robot can assist in verifying the integrity of the bond. It can perform non-destructive testing or inspection techniques, such as optical inspection or vibration testing, to ensure the quality and reliability of the bond.

Robot Retrieval: Once the bonding process and verification are complete, the robot carefully retrieves its end-effectors or grippers from the vacuum chamber, ensuring that the transducer and AO base remain securely bonded.

Using a robot in a vacuum environment for securing the transducer to the AO base offers several advantages. It allows for precise positioning and alignment, reducing the risk of human error. The robot's ability to operate in a vacuum ensures a clean and controlled environment, minimizing the introduction of contaminants. Additionally, the robot can apply consistent pressure during the bonding process, resulting in uniform and reliable bonds.

The use of robotics into the vacuum bonding process enhances efficiency, accuracy, and repeatability, leading to high-quality and robust thin film transducer deposition on the AO device.

A specific robotic system that can be used for picking and placing the transducer, reducing temperature in the vacuum chamber, applying Indium epoxy, and holding the transducer to the AO base until cured is the "FANUC R-2000iC/210F" robot. This robot is specifically designed for high-precision operations in extreme environments, including vacuum

applications. It offers a payload capacity of up to 210 kg and has a reach of 2655 mm, providing the necessary strength and reach for handling larger components in a vacuum chamber.

To enable the robotic system to perform these tasks, the following additional components and sensors can be incorporated:

Vacuum Gripper: The robot can be equipped with a custom vacuum gripper designed for handling delicate components in a vacuum environment. The vacuum gripper uses suction to securely hold the transducer during the pick-and-place operation.

Temperature Control System: A temperature control system, such as a cryogenic cooling system, can be integrated into the vacuum chamber. This system allows the chamber's temperature to be reduced to the desired level for the bonding process. The robot can interface with this system to monitor and control the temperature during the operation.

Dispensing System: The robot can be equipped with a dispensing system, such as a precision dispensing nozzle, to accurately apply the Indium epoxy onto the bonding surfaces. The dispensing system can be controlled by the robot to ensure precise and consistent epoxy application.

Force/Torque Sensors: Force/torque sensors can be installed at the robot's end-effector to provide feedback on the applied force and torque during the bonding process. These sensors enable the robot to monitor the pressure applied during the bonding and ensure it remains within the desired range.

Curing Station: A dedicated curing station can be incorporated into the vacuum chamber. This station provides controlled environmental conditions, such as temperature and humidity, to facilitate the curing process of the Indium epoxy. The robot can place the bonded transducer onto the curing station and hold it in place until the epoxy is fully cured.

By integrating the FANUC R-2000iC/210F robot with a vacuum gripper, temperature control system, dispensing system, force/torque sensors, and a curing station, the entire process of picking, placing, bonding, and curing the transducer can be efficiently carried out in a vacuum environment. This combination ensures precise control, repeatability, and reliability, ultimately resulting in high-quality bonding of the transducer to the AO base.

FIG. 1B shows an exemplary phased array opto-acoustic system. In a phased array opto-acoustic system, a pulsed laser beam is used to generate acoustic waves in a sample chamber such as optical element that receives the laser beam. The laser beam path is altered by the sound generated by the opto-acoustic elements in a transducer coupled to the optical element.

FIG. 1B-1C show a device 10 having stepped surfaces 12 and 16 on one end, and an angled end 30 opposite to the stepped surfaces 12 and 16. Turning now to FIG. 1A, an exemplary phase-array device includes an optical element having a surface with one or more steps formed thereon, where the optical element has at least two step heights. The different heights of the steps affect the acousto-optic RF frequency responses.

Transducers are mounted above the stepped surfaces 12 and 16, with one side of each transducer coupled to RF inputs 20-21 respectively, and the other side of the transducer connected to ground 18. The phased array transducer array has a plurality of transducers mounted on a top surface, with each transducer at a different height. Each transducer in the array is positioned at different vertical positions, such as at different heights above a sample chamber surface. One

example of such an array is a linear transducer array, in which a linear array of transducers is arranged along a surface, with each transducer positioned at a different height. Another example is a 2D transducer array, in which a grid of transducers is positioned at different heights to form a 2D array.

As shown in FIG. 1B, the optical element 10 has a surface with one or more steps 12 formed thereon, where the height of each step on the surface of the optical element can be precisely controlled during the manufacturing process, which allows for the creation of specific acousto-optic frequency responses. The step height can be chosen to match the wavelength of RF input, creating a specific phase shift, or to provide a specific diffraction angle. The height of each step can also affect the coupling between the acoustic wave and the optical wave, which determines the efficiency and bandwidth of the acousto-optic interaction. Grinding or subtractive techniques can be applied to the surface of the optical element to form one or more steps spaced apart on the surface, where the height of each step affects the acousto-optic RF frequency response. This provides a versatile and precise tool for manipulating the interaction between acoustic waves and optical waves. This technology is useful in a variety of applications, such as laser beam modulation, scanning, and frequency shifting.

In some cases, the steps 12 on the surface of the optical element can have a plurality of different heights. This can be done to create a more complex RF frequency response, which can be useful for certain applications. Transducer 13 is adhesively bonded with a thin epoxy layer 15 to the top to steps 12. This is done when the device 10 is inserted into its spot in the receptacle of FIG. 4C, applying a thin layer of epoxy 15 on top of step 13, and then by operation of vacuuming the transducer 13 to secure it to the bottom of the piston and by air pressure lowering the piston with the top of step 12 and evenly apply the epoxy to secure the transducer 13 to device 10.

By having steps with different heights, the acousto-optic device can be designed to deflect light at multiple angles or frequencies. This can be used, for example, in laser scanning systems, where the deflection angle of the incident laser beam needs to be precisely controlled.

The optical and acoustic elements in a phased array opto-acoustic device are arranged in a specific pattern to allow for precise control of the acoustic waves generated and detected. The optical elements transmit the laser beam through the sample chamber. The acoustic elements may include a phased array of transducers, which are used to control the direction and intensity of the acoustic waves.

In these applications, the optical element is made of a material that can support a propagating acoustic wave, such as a crystal or glass. The acoustic wave is created by a transducer, and its frequency is modulated by an applied RF signal. The optical element is made of a material that can support a propagating acoustic wave, such as a crystal or glass. The acoustic wave is created by a transducer, and its frequency is modulated by an applied RF signal. The height of each step affects the acousto-optic RF frequency response, is typically used in acousto-optic modulators and deflectors. One embodiment of the instant device enables a single device to work at two distinct frequencies, enabling one device to be used instead of two separate devices.

The optical element has a surface with one or more steps formed thereon, where the height of each step on the surface of the optical element can be precisely controlled during the manufacturing process, which allows for the creation of specific acousto-optic frequency responses. The step height

can be chosen to match the wavelength of the incident light, creating a specific phase shift, or to provide a specific diffraction angle. The height of each step can also affect the coupling between the acoustic wave and the optical wave, which determines the efficiency and bandwidth of the acousto-optic interaction.

Grinding or subtractive techniques can be applied to the surface of the optical element to form one or more steps spaced apart on the surface, where the height of each step affects the acousto-optic RF frequency response. This provides a versatile and precise tool for manipulating the interaction between acoustic waves and optical waves. This technology is useful in a variety of applications, such as laser beam modulation, scanning, and frequency shifting.

In some cases, the steps on the surface of the optical element can have a plurality of different heights. This can be done to create a more complex RF frequency response, which can be useful for certain applications.

By having steps with different heights, the acousto-optic device can be designed to deflect light at multiple angles or frequencies. This can be used, for example, in laser scanning systems, where the deflection angle of the incident laser beam needs to be precisely controlled.

FIG. 2A shows an exemplary process to form a phased-array transducer. The process includes the following operations:

- grinding an optical element to form two or more steps each with a predetermined height;
- depositing a conductive layer over the one or more steps;
- attaching one or more crystals or transducers on the one or more steps; and
- attaching electrodes to the top and bottom of each transducer.

In more details, the process of creating steps with different heights on the surface of an optical element can be done using various techniques, including etching or grinding. Etching can be used to selectively remove material from the surface, while grinding can be used to selectively remove material from certain areas of the surface. The end result is a surface with steps of varying heights that can be used to control the RF frequency response of the acousto-optic device.

The tools used to grind the optical element with the steps may vary depending on the material of the optical element and the desired precision of the steps. Some common tools used for grinding optical elements include diamond-tipped tools, abrasive wheels, and lapping/polishing pads.

Diamond-tipped tools are often used for grinding hard and brittle materials such as glass and some ceramics. These tools are made of a thin metal shank with a small diamond grit on the tip. The diamond grit is used to scratch away material from the optical element, creating the desired steps. Diamond-tipped tools can achieve high precision and smooth surface finishes.

Abrasive wheels are another common tool used for grinding optical elements. These wheels are made of abrasive particles bonded to a wheel shape. The abrasive particles can be made of materials such as silicon carbide or aluminum oxide, and the bond can be made of materials such as resin or vitrified ceramic. Abrasive wheels are often used for grinding softer materials such as plastic or some metals. These wheels can remove material quickly but may not achieve the same precision as diamond-tipped tools.

Lapping and polishing pads are used for finishing the optical element after grinding. These pads are made of a soft material such as felt or polyurethane foam and are coated with a fine abrasive material such as diamond paste. The

optical element is placed on the pad and moved in a circular motion to achieve a smooth surface finish.

Other tools that may be used for grinding optical elements include grinding machines, CNC equipment, and ultrasonic machining tools. The choice of tool depends on the material of the optical element, the desired precision, and the production volume.

Cleaning of the optical element surface is an essential step to ensure the adhesion of the subsequent gold layer. The cleaning operation typically involves the following steps:

Rinse the optical element with deionized water or a cleaning solvent to remove any loose particles or debris on the surface.

Immerse the optical element in a mild acid solution, such as hydrochloric acid or sulfuric acid, to remove any organic or inorganic contaminants. The duration of the immersion depends on the type and level of contamination and typically ranges from a few seconds to several minutes.

Rinse the optical element with deionized water to remove any residual acid and neutralize the surface.

Dry the optical element using a stream of dry nitrogen or argon gas or a cleanroom-compatible drying method such as spin-drying or vacuum-drying.

Inspect the optical element surface under a microscope or with a cleanroom-compatible surface analysis tool to ensure that the surface is free of particles, scratches, or defects that can affect the performance of the subsequent gold layer deposition.

By following these steps, the optical element surface can be prepared for the deposition of a uniform and adherent gold layer.

The height of each step on the surface of the optical element can be precisely controlled during the manufacturing process, which allows for the creation of specific acousto-optic frequency responses. The step height can be chosen to match the wavelength of the incident sound, creating a specific phase shift, or to provide a specific diffraction angle. The height of each step can also affect the coupling between the acoustic wave and the optical wave, which determines the efficiency and bandwidth of the acousto-optic interaction.

In an acousto-optic modulator, the applied RF signal modulates the frequency of the acoustic wave, which in turn modulates the phase or amplitude of the optical wave passing through the optical element. The modulation depth and frequency bandwidth of the modulator depend on the height and spacing of the steps on the optical element. The applied RF signal generates an acoustic wave that travels along the surface of the optical element, causing the incident optical beam to diffract at a specific angle. The applied RF signal modulates the frequency of the acoustic wave, which in turn modulates the phase or amplitude of the optical wave passing through the optical element.

A conductive layer is formed on the surface with the steps. In some cases, a conductive layer such as gold is deposited on the surface with the steps. This is done to allow for an electrical contact to be made with the surface, which is necessary for applying the RF signal to the acousto-optic device. The conductive layer also helps to reduce any unwanted reflections that may occur at the surface, which can affect the performance of the device.

First, a layer of nichrome is formed on the surface of the optical element since gold does not bond well with the optical element. Then a layer of gold is deposited above the nichrome layer. The conductive layer is typically deposited using a process called physical vapor deposition (PVD) or

sputtering. In PVD, a thin film of gold is deposited on the surface by evaporating the metal in a vacuum chamber and allowing it to condense onto the surface. In sputtering, a plasma is used to eject gold atoms from a target material and deposit them onto the surface.

The equipment used to deposit a fine layer of gold over the steps on the optical element is called a physical vapor deposition (PVD) system. PVD is a process where a solid material is vaporized in a vacuum environment, and the resulting vapor condenses onto a substrate to form a thin film.

In this case, the gold is evaporated in a vacuum chamber using an electron beam gun or a resistive filament. The vaporized gold atoms travel in a straight line towards the substrate, where they condense and form a thin layer on the surface of the optical element. The thickness of the gold layer can be controlled by adjusting the deposition rate and the deposition time.

The PVD system typically includes a vacuum chamber, a substrate holder, a source of gold, and a means to evaporate the gold. The substrate holder is designed to hold the optical element with the steps facing upwards and is positioned in the vacuum chamber. The chamber is then evacuated to a high vacuum level, typically in the range of 10^{-6} to 10^{-7} torr, to prevent contamination of the gold layer.

The gold source is typically a solid piece of gold that is heated by an electron beam or a resistive filament. As the gold is heated, it evaporates and condenses on the surface of the optical element. The deposition rate and deposition time can be controlled by adjusting the power of the heating source and the distance between the source and the substrate.

Once the gold layer is deposited, the optical element is removed from the vacuum chamber and inspected for uniformity and thickness. The thickness of the gold layer is typically in the range of a few hundred nanometers to a few microns, depending on the application.

Overall, the PVD system is a precise and reliable method for depositing a thin layer of gold on the surface of the optical element with the steps, ensuring optimal performance of the acousto-optic deflector.

A transducer or a crystal is then affixed to each step, preferably at different heights based on the height of the steps. The crystal is secured to each step of an optical element using epoxy bonding in one embodiment. The crystal is placed in contact with the conductive layer on the surface of the optical element. Electrodes positioned on each surface of each crystal, one connected to ground and one connected to an RF signal driving the crystal.

After the conductive layer is deposited and the crystal affixed to the optical element, electrical contacts are typically made to the surface using wire bonding or other techniques. Electrodes are then connected to each side of the crystal. Energy applied to the crystal generates an acoustic wave in response to an applied RF signal, and the electrodes are used to apply the RF signal to the crystal. An RF signal is then applied to the contacts, which generates the acoustic wave that modulates the refractive index of the acousto-optic material and deflects the incident light.

The electrodes are made of a conductive material, such as gold or aluminum, and are placed on opposite sides of the crystal. When an RF signal is applied to the electrodes, it generates an acoustic wave in the crystal, which can then be used to modulate the laser beam applied to the optical element.

An RF signal applied to the crystal would generate an acoustic wave, which would propagate through the crystal and into the optical element. The acoustic wave would then

modulate the refractive index of the optical element, causing it to diffract or deflect an incident beam of light.

The positioning and design of the electrodes can be critical to the performance of the acousto-optic device. The spacing between the electrodes, the shape of the electrodes, and the applied voltage all affect the frequency response of the device.

FIG. 2B shows an exemplary method to deflect a laser beam that includes:

- applying the laser beam to an optical element having one or more steps each with a predetermined height and one or more crystals or transducers on the one or more steps;
 - impedance matching the electrical input of the transducers to a 50-ohm load;
 - providing an electrical input to deflect the laser at the two or more frequencies; and
 - generating a sound field in the optical element to deflect a laser beam based on two or more frequencies.
- Other methods to form an opto-acoustic deflector include:
- grinding an optical element to provide one or more steps each with a predetermined height;
 - depositing a layer of gold over the one or more steps; and
 - attaching one or more crystals or transducers on the one or more steps.

FIG. 3 shows an exemplary tuning element that is coupled to the electrodes to match a predetermined impedance. The tuning element is used to match the predetermined impedance of the acousto-optic phased array transducers. The tuning element is typically an inductor with a predetermined coil length and a variable capacitor or a trimmer capacitor that is adjusted to match the impedance of the system. This is important to ensure maximum power transfer between the amplifier and the acousto-optic deflector, which leads to better performance and efficiency. The tuning element can be adjusted by a technician or can be automated using a feedback control loop to continuously monitor and adjust the impedance.

The tuning element is typically used to match the impedance of the acousto-optic deflector to the impedance of the driving circuit, which is often 50 ohms. This ensures maximum power transfer between the amplifier and the acousto-optic deflector. The impedance matching can help to minimize the reflection of the signal, which can cause unwanted interference and signal degradation.

The tuning element can be used to match the impedance of the acousto-optic deflector at specific RF frequencies to a 50-ohm impedance. This is typically done using a matching network or filter, which can be adjusted to achieve the desired impedance match. For example, if the deflector has an output impedance of 40 MHz and 60 MHz, a tuning element can be designed to match those frequencies to 50 ohms.

The tuning element can be implemented using various techniques, such as a lumped element filter, a distributed element filter, or a combination of both. The choice of technique depends on various factors such as the frequency range, the required bandwidth, and the physical size of the tuning element.

Once the tuning element is designed, it can be coupled to the electrodes of the acousto-optic deflector to achieve the desired impedance match. This can be done using various coupling techniques such as wire bonding or soldering. The impedance match ensures that maximum power is transferred from the RF amplifier to the acousto-optic deflector, which improves its efficiency and performance.

Opposite to the surface with the steps on the optical element is a slanted end with a compound angle to direct any reflected sound field away from the laser beam working range. This can help to reduce unwanted interference and improve the overall performance of the acousto-optic deflector. The compound angle can be designed to achieve the desired deflection angle for the laser beam while also minimizing any unwanted reflections or diffraction effects. The exact design of the slanted end will depend on the specific application and requirements of the acousto-optic deflector.

To prevent these issues, it is important to carefully control the deposition process and ensure that the gold layer is well adhered to the optical element's surface. Additionally, the amount of epoxy used should be carefully controlled and optimized to ensure strong bonding between the crystals and the surface without creating unnecessary attenuation of the acoustic waves. Quality control and testing should also be performed to ensure that the opto-acoustic deflector meets the required specifications for performance and reliability.

To form a slanted end of the optical element with a 30 degree angle measured from a long side to a short side and a surface with a 2 degree slope, the following steps can be taken:

- Obtain an optical element made of the desired material, such as germanium or tellurium dioxide (TeO₂).
- Determine the dimensions of the optical element and mark the area where the slanted end will be located.
- Use a precision saw or cutting tool to cut the slanted end at the desired angle. This can be done by tilting the cutting tool at a 30 degree angle relative to the long side of the optical element.
- Use a precision grinding tool, such as a diamond or abrasive wheel, to grind the surface of the slanted end to achieve the desired 2 degree slope. This can be done by adjusting the angle and pressure of the grinding tool.
- Inspect the surface of the slanted end to ensure that it is smooth and free of any cracks or defects.
- Clean the surface of the slanted end using a gentle solvent, such as isopropyl alcohol, to remove any debris or particles.
- Optionally, apply a protective coating, such as a thin layer of anti-reflection coating or a metal film, to the surface of the slanted end to improve its optical properties and prevent damage from handling or exposure to the environment.

Overall, the key to forming a slanted end with the desired angle and slope is to use precision tools and techniques to achieve the desired shape and surface quality, while minimizing any damage or stress to the optical element.

The optical element can be germanium, tellurium dioxide (TeO₂), lithium niobate, PZT, fused silica, chalcogenide glasses, glass. The choice of material for the optical element depends on various factors such as the desired optical properties, thermal and mechanical stability, and the specific application for which the element will be used.

The choice of crystal for an opto-acoustic laser system depends on the specific application and the properties of the crystal. Some of the factors that are typically considered when selecting a crystal for opto-acoustic applications include the crystal's acoustic and optical properties, as well as its thermal and mechanical stability, among others. One commonly used crystal for opto-acoustic applications is lithium niobate (LiNbO₃). LiNbO₃ has excellent acoustic properties, with a high acoustic velocity and a low acoustic attenuation, which makes it ideal for generating and detecting acoustic waves. It also has strong nonlinear optical

properties, which can be used for frequency conversion and modulation of the laser beam.

Another crystal that is commonly used for opto-acoustic applications is quartz (SiO₂). Quartz has a high acoustic velocity and a low acoustic attenuation, making it ideal for acoustic wave generation and detection. It is also highly transparent in the infrared region, which is useful for many laser applications.

Other crystals that are sometimes used for opto-acoustic applications include gallium arsenide (GaAs), gallium nitride (GaN), and sapphire (Al₂O₃). These crystals have specific properties that make them suitable for certain applications, such as high-temperature stability or high optical nonlinearity.

The choice of crystal for an opto-acoustic laser system depends on the specific requirements of the application, such as the desired acoustic and optical properties, as well as the thermal and mechanical stability of the crystal.

Some commonly used materials for acousto-optic devices include:

- Germanium: Germanium is a common material for acousto-optic modulators operating in the mid-infrared region due to its high refractive index and low absorption coefficient in this range.
- Tellurium dioxide (TeO₂): TeO₂ is a widely used material for acousto-optic devices due to its high electro-optic coefficient and wide transparency range from UV to mid-infrared.
- Lithium niobate (LiNbO₃): LiNbO₃ is a well-known electro-optic material with high electro-optic coefficients, making it a popular choice for high-speed acousto-optic modulators and deflectors.
- PZT: PZT or lead zirconate titanate is a piezoelectric material with high coupling coefficients, making it an ideal choice for transducers in acousto-optic devices.
- Fused silica: Fused silica has a high laser damage threshold and low coefficient of thermal expansion, making it suitable for high-power applications.
- Chalcogenide glasses: These are glasses containing elements from the chalcogen group such as sulfur, selenium, and tellurium. They have high refractive indices, wide transparency ranges, and are suitable for acousto-optic devices in the mid-infrared range.
- Glass: Different types of glasses can be used for acousto-optic devices depending on the specific application and desired properties. For example, borosilicate glass is commonly used for high-power applications, while crown glass is used for its high refractive index.

Next, a description of the process to form an opto-acoustic deflector is detailed. The operation includes the following:

Grinding the Optical Element: The first step is to grind the optical element to provide one or more steps, each with a predetermined height. This step involves precise grinding to create the desired step heights for optimal acousto-optic performance.

Deposition of Conductive Layer: After grinding, a layer of gold is deposited over the one or more steps of the optical element. To improve bonding of the gold to the optical layer, a layer of nichrome is first deposited on the optical element, and the gold conductive layer is subsequently formed. The gold layer provides a conductive surface that can be used for attachment of the crystals or transducers.

Attachment of Crystals or Transducers: One or more crystals or transducers are attached on the one or more steps of the optical element. These crystals or transducers generate acoustic waves that interact with light passing through the optical element and deflect it in a controlled manner. The

attachment process can involve a variety of techniques, such as epoxy bonding, soldering, or mechanical clamping.

Capturing Electrical Output: Electrical signals are generated by the crystals or transducers when they are subjected to acoustic waves. These electrical signals are captured using specialized electronics designed to amplify and process them for further analysis.

Impedance Matching: The final step is to impedance match the electrical output to a 50-ohm load. This involves the use of a tuning element such as a matching network or a transformer, which helps to adjust the impedance of the electrical signal to match the required load. This step is critical to ensure maximum power transfer and minimum signal loss.

Once the impedance matching is complete, the opto-acoustic deflector is ready for use. It can be integrated into various optical systems to deflect and control light with high precision, making it useful for a variety of applications such as laser printing, holography, and optical communication.

In the context of a transducer array with each transducer at a different height, it is possible to achieve the height difference by grinding the surface on which the transducers are mounted to create a stepped profile. This can be accomplished using precision grinding tools and techniques, such as diamond grinding or abrasive blasting.

The grinding process involves removing material from the surface in a controlled manner to create a series of steps or terraces with different heights. The transducers can then be mounted on the surface at the desired heights, with each transducer positioned on a different terrace. The height difference between the transducers can be controlled by adjusting the height and spacing of the terraces during the grinding process.

Grinding can be a precise and effective method for creating a stepped surface with controlled heights for a transducer array. The result of the grinding process forms a set of pedestals to mount transducers to the pedestal array, with at least two transducers with different heights.

Attaching a transducer to a surface of the steps can be done using an epoxy spread in an even and thin manner. This method involves applying a layer of epoxy or other adhesive material to the surface and then placing the transducer on top of the adhesive. The epoxy is then allowed to cure, creating a strong and permanent bond between the transducer and the surface.

As each transducer may be positioned at a different height, an array of spreaders can be used to apply the epoxy to the surface in a controlled and uniform manner. Each application head can be customized according to the desired height, allowing the epoxy to be applied to specific areas of the surface to create the desired stepped profile. The use of an array of spreaders, each with self adjustable heights, can provide a high degree of control and precision in the placement of the transducers, allowing for a more uniform and consistent array. However, specialized equipment is needed to create and operate the array of individually pliant spreaders so that each spreader automatically conforms to the different step heights.

The array of individually pliant spreaders can be pneumatically actuated to allow for precise control over the height of each transducer in the array. Pneumatic actuation involves using compressed air to control the movement of the spreaders and to stop them at the desired height for each surface portion.

By using pneumatic actuation with the pliant or conformal heads, the spreaders can be controlled to stop at the exact height required for each transducer, allowing for an even

spread of the epoxy and a precise positioning of the bonding pressure on the transducers to ensure optimum bond between the transducer and the corresponding step on the optical element. This method can be particularly useful for creating an array with a plurality of transducers, as it allows for the process to be automated and ensures a consistent and accurate result.

The use of pneumatically actuated spreaders also offers other advantages over manual methods, such as greater speed, efficiency, and repeatability. It can also reduce the risk of human error and variability in the epoxy spreading process, which can lead to more consistent and reliable results.

Using pneumatically actuated spreaders to create a transducer array with each transducer at a different height can be a viable option for applications that require precise and uniform positioning of the transducers. The suitability of this method will depend on the specific requirements of the application and the available resources and expertise.

Attaching the crystals or transducers to the layer of gold on the optical element can be done through several methods, including ultrasonic bonding, thermal compression bonding, or epoxy bonding.

Ultrasonic bonding involves placing the crystal or transducer onto the layer of gold and using ultrasonic waves to generate heat and create a bond between the two materials. This method is commonly used for smaller crystals and transducers.

Thermal compression bonding involves applying heat and pressure to the crystal or transducer, causing it to bond with the layer of gold. This method is commonly used for larger crystals and transducers.

Epoxy bonding involves applying a small amount of epoxy adhesive to the crystal or transducer and placing it onto the layer of gold. The adhesive is then cured, creating a strong bond between the crystal or transducer and the gold layer.

Regardless of the method used, care should be taken to ensure that the crystal or transducer is properly aligned with the gold layer to ensure optimal performance of the opto-acoustic deflector.

The thickness of the epoxy layer used to attach the crystals to the layer of gold in an opto-acoustic deflector must be as thin as possible for several reasons:

Minimizing acoustic attenuation: The epoxy layer can attenuate the acoustic wave generated by the transducer, which can reduce the deflection efficiency of the device. A thinner epoxy layer can minimize the attenuation of the acoustic wave and improve the device's performance.

Avoiding acoustic interference: The epoxy layer can also cause acoustic interference, particularly if it is too thick. This interference can result in unwanted diffraction or scattering of the acoustic wave, which can also reduce the device's performance. A thinner epoxy layer can help to avoid this problem.

Minimizing optical distortion: The epoxy layer can also introduce optical distortion due to its refractive index. This distortion can be particularly problematic if the optical element is used in a laser beam steering application where precise control of the beam direction is critical. A thinner epoxy layer can help to minimize this distortion and improve the device's performance.

Overall, a thinner epoxy layer can help to improve the efficiency, accuracy, and reliability of an opto-acoustic deflector.

17

The process of applying an ultra-thin layer of epoxy involves several steps, including:

Preparation: The surface of the gold layer on the optical element must be thoroughly cleaned to remove any contaminants that may interfere with the adhesion of the epoxy. This can be done using a combination of solvents and ultrasonic cleaning.

Mixing: The epoxy is typically a two-part adhesive that must be mixed together in precise proportions. This is often done using a syringe or other dispensing device to ensure accuracy.

Dispensing: Once mixed, the epoxy is dispensed onto the surface of the gold layer. To achieve an ultra-thin layer, a dispensing device with a small aperture is typically used.

Spreading: The epoxy is spread evenly across the surface of the gold layer using a micro-manipulator or other precision tool. This must be done carefully to avoid creating air bubbles or other imperfections.

Curing: Once the epoxy has been applied, it must be cured according to the manufacturer's instructions. This typically involves heating the optical element to a specific temperature for a set amount of time.

By using precise dispensing and spreading techniques, it is possible to apply an ultra-thin layer of epoxy that is only a few microns thick. This is important for acousto-optic devices because it minimizes any interference that the epoxy layer may have on the performance of the device.

Delamination of the gold layer and epoxy failure can both be potential issues in the manufacturing process of an opto-acoustic deflector. Gold delamination can occur due to poor adhesion between the gold layer and the optical element's surface. This can be caused by inadequate cleaning of the surface before deposition, or by the use of inappropriate conditions during the deposition process. If the gold layer delaminates, it can cause the crystals to detach from the surface, resulting in the failure of the entire device. Epoxy failure can occur due to a number of factors. One issue can be improper mixing of the epoxy, leading to inconsistencies in the hardness and adhesive properties of the epoxy. Another issue can be the use of too much or too little epoxy, which can affect the bonding strength and stability of the crystals. In addition, if the epoxy layer is too thick, it can lead to acoustic wave attenuation, reducing the efficiency of the opto-acoustic deflector.

If the epoxy layer is too thick, it can create several issues in the opto-acoustic deflector. Firstly, a thick layer of epoxy can cause an uneven surface, which can affect the optical properties of the deflector. This can result in distortion, scattering, or attenuation of the laser beam passing through the deflector. Secondly, a thick layer of epoxy can increase the distance between the crystal and the gold layer, which can affect the efficiency of the acousto-optic interaction. This can result in lower deflection efficiency, higher power consumption, or increased heat generation.

Additionally, a thick layer of epoxy can cause mechanical stress on the crystal and the gold layer. As the epoxy cures, it can generate heat and shrink, which can cause the crystal or the gold layer to deform or crack. This can affect the stability, reliability, and lifetime of the opto-acoustic deflector.

To avoid these potential problems, it is important to apply a thin and uniform layer of epoxy on the steps of the deflector surface. This can be achieved by using a precision dispenser, a flat blade or a roller to spread the epoxy evenly. The thickness of the epoxy layer should be controlled within a certain range, depending on the type and viscosity of the

18

epoxy, the height and pitch of the steps, and the required optical and mechanical properties of the deflector. Typically, the thickness of the epoxy layer can be in the range of a few micrometers to tens of micrometers, depending on the application requirements.

In one embodiment, a method for securing crystals to a gold plated optical element includes:

placing each crystal on a moveable pedestal mounted on a piston;

temporarily securing each crystal to the moveable pedestal;

applying an epoxy to a plurality of steps on a deflector surface;

placing the piston with the crystals over the plurality of steps;

actuating the piston and moving each moveable pedestal to contact the crystal with the epoxy;

releasing the crystal from the moveable pedestal; and

curing the epoxy to secure the crystal to the steps. The method for securing crystals to a gold plated optical element using epoxy involves the following steps:

Placing each crystal on a moveable pedestal mounted on a piston: The crystals are carefully placed on a moveable pedestal which is mounted on a piston that is capable of moving up and down.

Temporarily securing each crystal to the moveable pedestal: To prevent the crystals from falling off during the assembly process, they are temporarily secured to the moveable pedestal using a small amount of wax or adhesive.

Applying an epoxy to a plurality of steps on a deflector surface: A small amount of epoxy is applied to a plurality of steps on the deflector surface. It is important to apply the epoxy thinly and evenly to avoid any inconsistencies in the final assembly.

Placing the piston with the crystals over the plurality of steps: The piston, with the crystals mounted on the moveable pedestals, is carefully lowered over the plurality of steps on the deflector surface.

Actuating the piston and moving each moveable pedestal to contact the crystal with the epoxy: The piston is actuated to move each moveable pedestal, and the crystals are brought into contact with the epoxy on the steps of the deflector surface.

Curing the epoxy to secure the crystal to the steps: Once the crystals are in place, the epoxy is cured. This is typically done by heating the assembly to a specific temperature for a specified amount of time. The curing process ensures that the crystals are securely attached to the deflector surface.

It is important to note that the entire assembly process should be carried out in a clean environment, free of dust and other contaminants, to avoid any potential issues with the final product. Additionally, care should be taken to ensure that the crystals are properly aligned with the deflector surface to avoid any misalignment issues during use.

Due to the steps with variable heights, the piston is a gimbal that can move in x and y axis to apply controlled pressure to the crystals and to spread the epoxy as thin as possible. The use of a gimbal allows for precise movement of the piston in both the x and y directions, which helps to ensure that each crystal is pressed evenly onto the deflector surface even where different step heights are involved, and that the epoxy is spread evenly across the steps. This is important for achieving a strong and reliable bond between

the crystals and the deflector surface, as well as for ensuring that the crystal positions are aligned correctly. The gimbal can also be used to adjust the pressure and angle of the crystals, which can be important for optimizing the performance of the opto-acoustic deflector.

FIG. 4 shows an exemplary opto-acoustic laser system, which is a type of system that combines optical and acoustic techniques for a range of applications, such as sensing, imaging, and spectroscopy. Some of the main components of an opto-acoustic laser system include:

Laser source 400: A laser source is used to generate the optical radiation that interacts with the sample. Different types of lasers can be used, depending on the specific application, such as pulsed or continuous wave (CW) lasers.

Optical components: 402 Optical components are used to guide, focus, and manipulate the laser beam. These may include mirrors, lenses, polarizers, and filters.

Acoustic transducers 406: Acoustic transducers are used to generate and detect acoustic waves that are produced by the interaction of the laser beam with the sample. These can be piezoelectric transducers, optical fibers, or other types of sensors. A sample chamber is the region where the laser beam interacts with the sample. Preferably the sample chamber is inside an optical element such as element 10 of FIG. 1, but in other applications the sample chamber can be a gas cell, a liquid cell, or a solid-state sample holder, depending on the application.

Signal processing and data acquisition 420: Signal processing and data acquisition systems are used to analyze the acoustic signals generated by the interaction of the laser beam with the sample. These systems may include amplifiers, filters, and data acquisition cards.

Control electronics 422: Control electronics are used to synchronize the laser and acoustic pulses, as well as to control the various components of the system, such as the laser power, acoustic frequency, and detection settings.

The phased array opto-acoustic system is a type of opto-acoustic imaging system that uses an array of optical and acoustic elements to generate and detect acoustic waves for imaging and sensing applications.

When an RF frequency acoustic wave propagates inside an optically transparent medium, a periodic change in the refractive index occurs due to the compressions and rarefactions of the sound wave. This periodic variation produces a grating capable of diffracting an incident laser beam.

Two types of diffraction can occur:

Operation as a Raman-Nath device occurs when the laser beam enters the sound field at normal incidence and the light-sound interaction length $L < \Lambda^2/\lambda$, where Λ is the laser wavelength in the medium and λ is the sound wavelength which is analogous to the line spacing of a thin diffraction grating. Klein and Cook¹ have defined a parameter Q .

$$Q = 2\pi\lambda L F^2/n V^2$$

where F is the RF acoustic frequency, n the index of refraction, and V the acoustic velocity of the interaction medium. For a Q value of approximately 4 or less operation is said to be in the Raman-Nath region. Operation in this mode is characterized by the fact that many diffracted orders are generated and the maximum amount of light in any of the diffracted orders is limited to approximately 35 percent. This type of device is typically used as a loss modulator for intracavity appli-

cations that require light to be removed from the zero order or undiffracted beam passing straight through the device; for applications such as q-switching.

Operation as a Bragg device occurs when $L > \Lambda^2/\lambda$ or according to Klein-Cook when Q is approximately 7 or greater. In this mode the incident laser beam should enter the sound field at the Bragg angle

$$\theta_B = \lambda/2\Lambda$$

Maximum diffraction efficiency occurs when the incident laser beam and the first order diffracted beam are adjusted to form symmetrical angles with respect to the acoustic wavefronts. Depending upon design, up to 90 percent of the incident light can be diffracted into one order. Since acousto-optic devices are not 100 percent efficient, all of the light cannot be removed from the zero order. Since no light remains in the first order when the sound power is removed, the first diffracted order is used in applications such as amplitude modulation which require a high extinction ratio.

Amplitude modulation is detailed next. Beam separation or angular deviation between zero and first order is twice the Bragg angle

$$\theta = 2\theta_B = \lambda F/V$$

The separation is proportional to acoustic frequency with a higher center frequency giving greater separation. The percentage of light I_1 in the first order or diffraction efficiency is given by

$$\eta = I_1/I_0 = \sin^2(2.22[1/\lambda^2(L/H)M_2P_s]^{1/2})$$

Diffraction efficiency is proportional to acoustic power (Pa), acousto-optic interaction material figure of merit (M_2), sound field length to height aspect ratio (UH), and inversely proportional to the square of the optical wavelength ($1/\lambda^2$).

Since the diffraction process is a \sin^2 function please note that it is possible to overdrive the modulator resulting in decreased diffraction efficiency: Also note that since efficiency is inversely proportional to optical wavelength, longer wavelengths will require more RF drive power (P), and shorter wavelengths will require less RF drive power. Drive power can be determined for optical wavelengths different from the test condition wavelength by

$$P_1/P_2 = k(\lambda_1/\lambda_2)^2$$

Rise time, T_r , is the time interval for the light intensity to go from 10% to 90% of maximum value in response to an acoustic step function. Rise time for a Gaussian laser beam is given by

$$T_r = 0.64 D/V = 0.64T$$

where T is the transit time of the acoustic wave across a laser beam of diameter D .

The frequency response of an acousto-optic modulator can be characterized by the modulation index or depth of modulation (M) which can be calculated for a sinusoidal input

$$M = \exp(-\pi^2 f_m^2 T^2/8)$$

The 50% depth of modulation or -3 db modulation bandwidth occurs when $f_m T = 0.75$ where f_m is modulation frequency.

When viewing photodiode current (see FIG. 5) on an oscilloscope, the Depth of Modulation can be calculated from the maximum intensity (I_{max}) and minimum intensity (I_{min}) readings displayed

$$M = (I_{max} - I_{min}) / (I_{max} + I_{min})$$

or in terms of contrast (C) where

$$C = I_{max}/I_{min}$$

$$M = (C-1)/(C+1).$$

Optical frequency shifting can be done. Because the acoustic wave travels across the optical beam, the optical frequency undergoes a Doppler shift by an amount equal to the acoustic frequency. The Modulator can up-shift or down-shift the optical frequency depending on the orientation of the optical beam in relation to the sound field. If the laser beam enters the sound field at the Bragg angle in opposition to the direction of the sound field, the optical frequency is up-shifted (plus first order) and if the beam enters at the Bragg angle in the same direction as the sound field, the optical frequency is down-shifted (minus first order).

Deflection is detailed next. Since the angular position of the first order beam is proportional to acoustic frequency, an incremental frequency change will produce an incremental angular deviation

$$\Delta\theta = \lambda\Delta F/V$$

Total deviation is limited by the transducer electrical bandwidth.

Deflector resolution N, the number of resolvable beam positions across the total scan angle is defined as the total scan angle divided by the diffraction spread of the laser beam. For a uniformly illuminated optical beam

$$N = (\lambda\Delta F/V) / (\lambda/D) = (D/V)\Delta F = r\Delta F$$

Since r is the transit time of the acoustic wave across the beam diameter D and IIF is the RF bandwidth of the device, the product of the two is called Time Bandwidth product. Since r is the time for sound to fill or clear the optical aperture, it limits the spot position access time in a random access application.

The far field light intensity pattern for the deflected beam is a $(\sin x/x)^2$ function. By the Rayleigh Criterion the above resolution occurs when the maximum intensity at one beam position coincides with the intensity minimum at an adjacent beam position.

Changing frequency from the nominal center RF frequency to deflect the laser beam destroys the Bragg angle symmetry condition for efficient diffraction efficiency, resulting in reduced diffraction efficiency at the edges of the scan bandwidth. Incorporating acoustic phased array beam steering in the deflector design will maintain a high diffraction efficiency across the total deflection bandwidth since the acoustic wavefronts effectively rotate in response to a change in frequency to maintain the proper Bragg condition. Acoustic phased array beam steering is accomplished by mechanically cutting into the glass a series of small steps which are one half of an acoustic wavelength high at center frequency and phasing adjacent piezoelectric transducers 180 degrees apart. This technique causes the acoustic wavefronts to effectively rotate in response to a change in applied RF frequency. Because of the beam steering high uniform diffraction efficiency occurs only on one side of the zeroth order beam as the RF frequency is swept from minimum to maximum. On the opposite side of zero order the Bragg condition is satisfied for only one frequency. As the RF frequency is repetitively swept across the entire range, the position for high diffraction efficiency will change in response to mechanically rotating the deflector.

In linear scanning applications where T, total scan time, is short, a frequency gradient is produced across the optical aperture. The frequency gradient acts like a cylinder lens of

fixed focal length $f_l = V T/68$, either converging or diverging the diffracted beam. If total scan time T is short, the cylinder effect will preclude bi-directional scanning: The effect can be compensated for in a unidirectional fixed scan rate system by adjusting the beam shaping optics used to expand D for resolution purposes.

Multiple beam generation is detailed next. Every acoustic frequency in an acousto-optic device defines a unique angular beam position. If several acoustic frequencies are applied simultaneously to the acousto-optic device, a corresponding number of diffracted beams will be created.

Separation between beams is

$$\Delta\theta = \lambda\Delta F/V$$

where ΔF is the acoustic frequency difference between diffracted beams. Each beam can be modulated independently but the intensities of the beams are interrelated.

One AOD deflector embodiment operates at 40 MHz and 60 MHz with high efficiency and equal intensity. Optical grade, single crystal Germanium is used for the interaction medium and Lithium Niobate piezoelectric transducers are used to generate the RF frequency acoustic traveling wave inside the Germanium.

The RF center frequency of operation is 50 MHz and the height of the sound field or active aperture is 10 mm. RF frequencies of operation are 40 MHz and 60 MHz. The Germanium optical surfaces are coated with a multi-layer dielectric antireflection coating designed for operation at 9.4 μm . In this embodiment, the pulse rise time, Tr (10% to 90%), and depth of modulation are determined by the light beam diameter D. For Model AGD-5147 with acoustic velocity $V = 5.5 \text{ mm}/\mu\text{sec}$

$$T_r = 117 D \text{ nsec}$$

where D is in mm. Modulation response for sinusoidal inputs can be calculated as

$$M = \exp(-4.08 \times 10^{-2} D^2 f_m^2)$$

where D is beam diameter in mm and f_m is modulation frequency in MHz. For a deflector, a large beam width is required to obtain full resolution. This precludes operation as a high speed modulator.

The frequency shift range is plus or minus 40 MHz to 60 MHz depending on whether the plus or minus diffracted order is used. The Deflector produces two first order, diffracted, optical beams with an angular separation of 34.2 mad. At 9.4 μm , a frequency deviation of 20 MHz centered at 50 MHz will produce an angular separation of 34.2 milliradians centered 85.4 milliradians from the undeflected light. The two optical beams can be individually amplitude modulated.

The optical beam is aligned parallel to the sound field and adjust the vertical position to assure that the total optical beam is in the sound field. Initially, set the device 10 optical face nearly normal to the light beam ; apply 50 watts RF power at 60 MHz and rotate the device to adjust the Bragg angle so that optimum first order light intensity is obtained. Change RF frequency to 40 MHz with 50 watts RF power and note the diffraction efficiency. The 40 MHz and 60 MHz efficiencies should be close. Slightly adjust the Bragg angle condition so that equal intensities are obtained at both RF frequencies. After equal intensities are obtained, adjust RF drive power to 120 Watts. Once again check both efficiencies. A slight adjustment may be needed to obtain equal intensities. The zero and unwanted diffraction orders can be spatially filtered with an aperture.

23

The device of FIG. 1 can be used in a number of applications. For example, the device can be used in laser modulators and deflectors which are devices used in laser systems to modify the behavior of laser beams. The laser modulator is a device that changes the properties of a laser beam as it propagates through a medium. It can be used to control the intensity, phase, or polarization of the beam. The modulators can be made using materials that have nonlinear optical properties, such as lithium niobate, which allows for the manipulation of the laser beam. The laser deflector is a device that changes the direction of a laser beam. It can be used to steer the beam to a particular location or to scan the beam over a surface.

In the context of optics and telecommunications, modulation refers to the process of intentionally modifying a signal (e.g., light) by varying one or more of its properties, such as amplitude, frequency, or phase. This can be used for a variety of purposes, including deflection and shifting of the signal. For example, in acousto-optic modulation, a signal is deflected or shifted by using an AOD to apply a varying acoustic wave to a crystal, which in turn alters the refractive index and deflects or shifts the light passing through it. Similarly, in electro-optic modulation, a voltage is applied to a crystal to change its refractive index and modulate the light passing through it. These types of modulation can be used in a variety of applications, such as telecommunications, signal processing, and laser machining.

The invention has been described with reference to the preferred embodiments. Obviously, modifications and alterations will occur to others upon reading and understanding the preceding detailed description. It is intended that the invention be construed as including all such modifications and alterations insofar as they come within the scope of the appended claims or the equivalents thereof.

What is claimed is:

1. A method to form a phased-array transducer, comprising:

activating a robot arm within a vacuum chamber;
 positioning a vacuum gripper of the robot arm to pick up a transducer;
 reducing the temperature within the vacuum chamber using the temperature control system;
 applying Indium epoxy onto bonding surfaces of the transducer and an acousto-optical device base using an Indium epoxy dispenser;
 monitoring the applied force and torque during the bonding process using one or more force or torque sensors;
 placing the bonded transducer onto the curing station within the vacuum chamber; and
 holding the transducer on the curing station until the Indium epoxy is fully cured.

2. The method of claim 1, comprising:

grinding an optical element to form two or more steps each with a predetermined height;
 depositing a conductive layer over the one or more steps;
 attaching one or more crystals or transducers on the one or more steps; and

24

attaching electrodes to the top and bottom of each transducer.

3. The method of claim 1, comprising matching the input of the transducers to a predetermined impedance.

4. The method of claim 1, comprising providing a tuning element coupled to the transducers with an output impedance of 50 ohms.

5. The method of claim 1, comprising a tuning element including inductive and capacitive passive components.

6. The method of claim 1, comprising tuning element comprises a 1:1 balun, a 4:1 transformer, a capacitor, and an inductor.

7. The method of claim 1, wherein the optical element comprises a slanted end, wherein the slanted end comprises a compound angle to move reflected sound field out of a laser beam working range, wherein the slanted end forms a 30 degree angle measured from a long side of the optical element to a short side of the optical element, and wherein a surface of the slanted end comprises a 2 degree slope.

8. The method of claim 1, wherein the optical element comprises germanium, tellurium dioxide (TeO₂), lithium niobate, PZT, fused silica, chalcogenide glasses, glass.

9. The method of claim 1, wherein the tuning element matches a deflector output impedance at 40 MHz and at 60 MHz to a 50 ohm impedance.

10. A robot apparatus for securing a transducer to an AO base in a vacuum environment, comprising:

a robotic arm system capable of operating in a vacuum chamber;
 a vacuum gripper attached to the robotic arm system, configured to securely hold the transducer;
 a temperature control system integrated into the vacuum chamber, capable of reducing the chamber's temperature;
 a dispensing system attached to the robotic arm system, configured to apply Indium epoxy onto bonding surfaces of the transducer and the AO base;
 one or more force or torque sensors installed at an end-effector of the robotic arm system, configured to measure applied force and torque during the bonding process; and
 a curing station within the vacuum chamber, providing controlled environmental conditions for curing the Indium epoxy.

11. A method to deflect a laser beam, comprising:

applying the laser beam to an optical element having one or more steps each with a predetermined height and one or more crystals or transducers on the one or more steps;
 impedance matching the electrical input of the transducers to a 50-ohm load;
 providing an electrical input to deflect the laser at the two or more frequencies; and
 generating a sound field in the optical element to deflect a laser beam based on two or more frequencies.

* * * * *